



MICRO MATIC

DISPENSE EQUIPMENT 2020



DEDICATED TO
DRAFT QUALITY



DEDICATED TO DRAFT QUALITY™

We are **passionate about Draft Quality** and will leverage 50+ years of **quality assurance, industry experience,** and **service expertise** in your favor. Micro Matic understands the challenges of maintaining draft quality and **provides the best solutions** to overcome them - from corner pub to major stadium.

Founded in 1953 as a metal processing company in Odense, Denmark, we started producing draft beer equipment in 1970. **With customers in more than 150 countries and 20 offices in 14 countries,** we have since gained a market leading position and are today the **global leader in the supply of couplers, spears and dispense solutions** to the brewing industry.

CONTENTS

Spears	4
Dispense Heads	14
Quick Fit [™]	34
Regulators	36
Fonts	48
Taps	84
Handles	88
Point of Sale	94
Flexi Draft [™]	98
Valpar Beverage Tubing & Pythons	118
Cleaning	130
Miscellaneous Products	137
Terms of sale and delivery	139



SPEARS

NEXT GENERATION SPEARS

Safety features are our top priority to prevent accidental or unauthorised removal of spears and ensure that in the event of tampering of any kind, no injury will occur.

The Micro Matic spears are designed for **maximum strength, hygiene, quick filling and are all manufactured in stainless steel**. The spears have been improved with a **unique color and year coding for preventive maintenance**.

The Micro Matic spears have a proven **long life durability in all conditions**.

SPEARS

A-SYSTEM

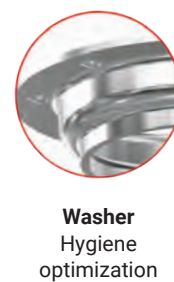
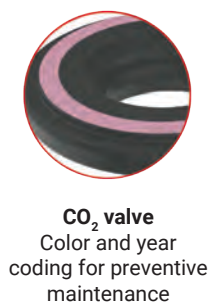
The Micro Matic A-system is a security flat type round flange design with a single valve operation. The spear has been improved with a unique color and year coding for preventive maintenance and hygiene properties have been optimized.



PARTS



HIGHLIGHTS



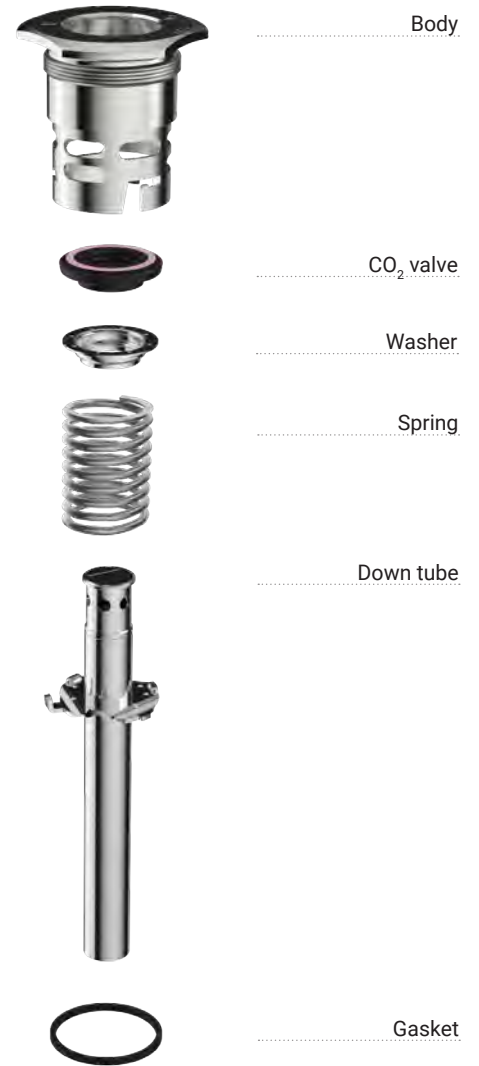
SPEARS

G-SYSTEM

The Micro Matic G-system is a security flat type trilobe flange design with a single valve operation. The spear has been improved with a unique color and year coding for preventive maintenance and hygiene properties have been optimized.



PARTS



HIGHLIGHTS



Color and year coding for preventive maintenance



Hygiene optimization



Hygiene optimization

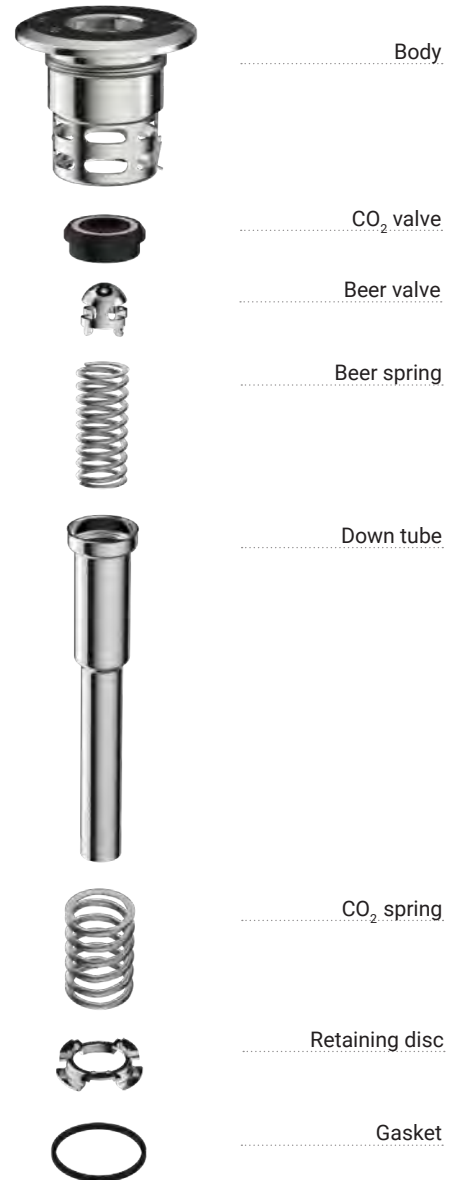
SPEARS

M-SYSTEM

The Micro Matic M-system is a security combination spear design with round flange and with double valve operation. The spear has been improved with a unique color and year coding for preventive maintenance and hygiene properties have been optimized.



PARTS



HIGHLIGHTS



SPEARS

S-SYSTEM

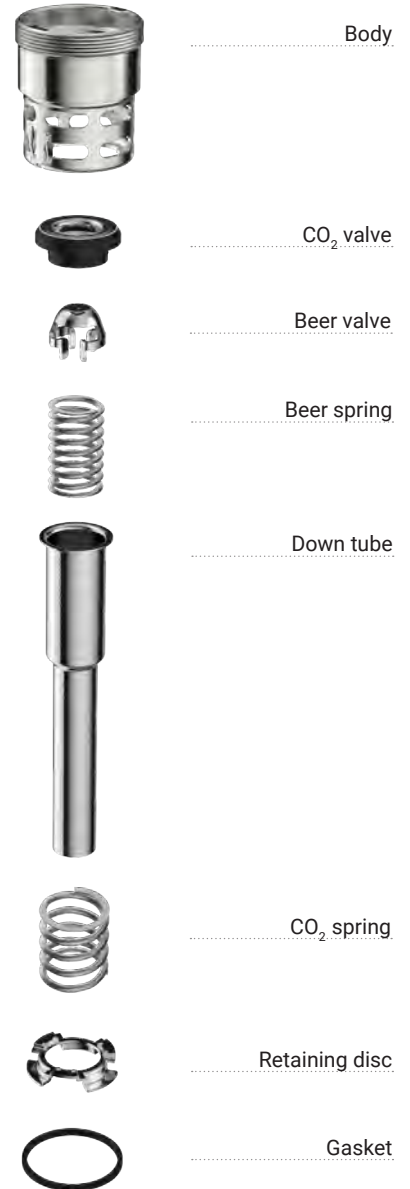
The Micro Matic S-system is a security well type design with double valve operation. The spear has been improved with a unique color and year coding for preventive maintenance and hygiene properties have been optimized.



Unique color and year coding for preventive maintenance



PARTS



HIGHLIGHTS



CO₂ valve
Color and year coding for preventive maintenance



Retaining disc
Hygiene optimization

SPEARS

D-SYSTEM

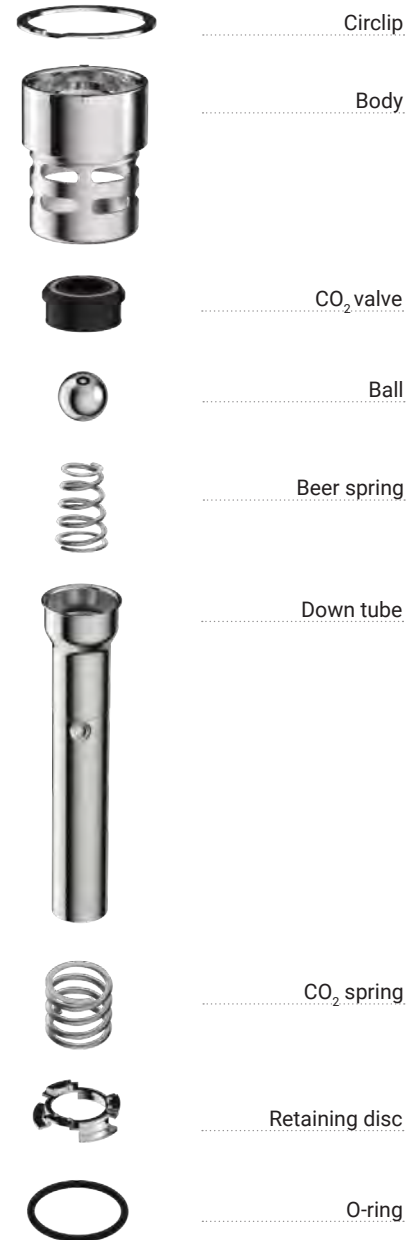
The Micro Matic D-system is a security well type design with double valve operation.

The spear comes with a unique color and year coding for preventive maintenance and hygiene properties have been optimized.

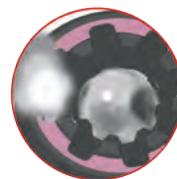
The safety of the spear has been optimized with a degassing function.



PARTS



HIGHLIGHTS



CO₂ valve
Optimized with a degassing function



Retaining disc
Hygiene optimization

SPEARS

L-SYSTEM

The Micro Matic L-system has a unique valve construction for soft drinks, with round flange and a double valve operation.

The spear comes with a unique color and year coding for preventive maintenance.

The L-system is equipped with a tamper evident ring for detecting unauthorized disassembly.



PARTS



HIGHLIGHTS



CO₂ valve
Color and year coding for preventive maintenance

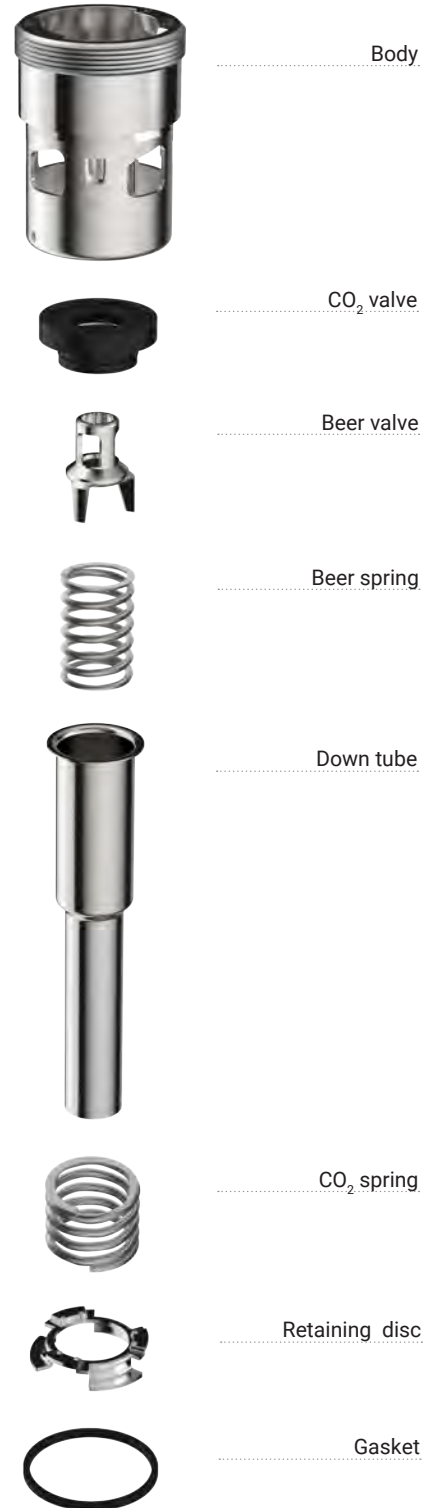
SPEARS

U-SYSTEM

The Micro Matic U-system is a security well type design with double valve operation.



PARTS



SPEARS

WHAT IS COLOR CODING?


The market leading spears from Micro Matic comes (optional) with a **unique color and year coding for preventive maintenance.**


Color-coding of the spears enables camera-controlled or mechanical separation of kegs that are due for routine, scheduled maintenance which Micro Matic recommends at approximately 7-8 year cycles.

In 2018 the color-code was brown and in 2019 it is yellow (note that there will be a 3-4 month transition period each year from one color to the next).

Below you can find the color markings for the coming years:

 **2019** yellow RAL: 1016


 **2024** light green RAL: 6019


 **2020** rose pink RAL: 3015

 **2025** blue RAL: 5017


 **2021** violet RAL: 4005

 **2026** red RAL: 3020

 **2022** light blue RAL: 5024

 **2027** green RAL: 6032

 **2023** magenta RAL: 4010

 **2028** brown RAL: 8001



Scan the QR code
and see how it works.



DISPENSE HEADS

YOUR SAFETY IS OUR RESPONSIBILITY

For any draft beer or soft drink system the performance of the dispense head is vital. The dispense head connects the gas and beverage lines to the keg and ensures a pressurized flow. Micro Matic offers a full range of both standard dispense heads as well as safety couplers with integrated unrestricted CO₂ prevention that fits all standard keg connections.

Our dispense heads are all aimed at providing the highest level of **safety, userfriendly operations, easy cleaning and ergonomic design**:

- The stainless steel housing and POM lower part ensures **long-term durability** of the Micro Matic handle.
- The handle is ergonomically designed for **easy and safe operation**.
- The full range of Micro Matic dispense head offers great opportunities for **individually branded labels** on the handle in order to customise according to your requests.
- Optional **stainless steel** or **tin-nickel plated brass**.

SAFETY COUPLERS

A-SYSTEM



PARTS



HIGHLIGHTS

- Single O-ring construction
- Unrestricted CO₂ flow
- Degassing / anti splash handling
- Full range of hygienic connections

DISPENSE HEADS

A-SYSTEM

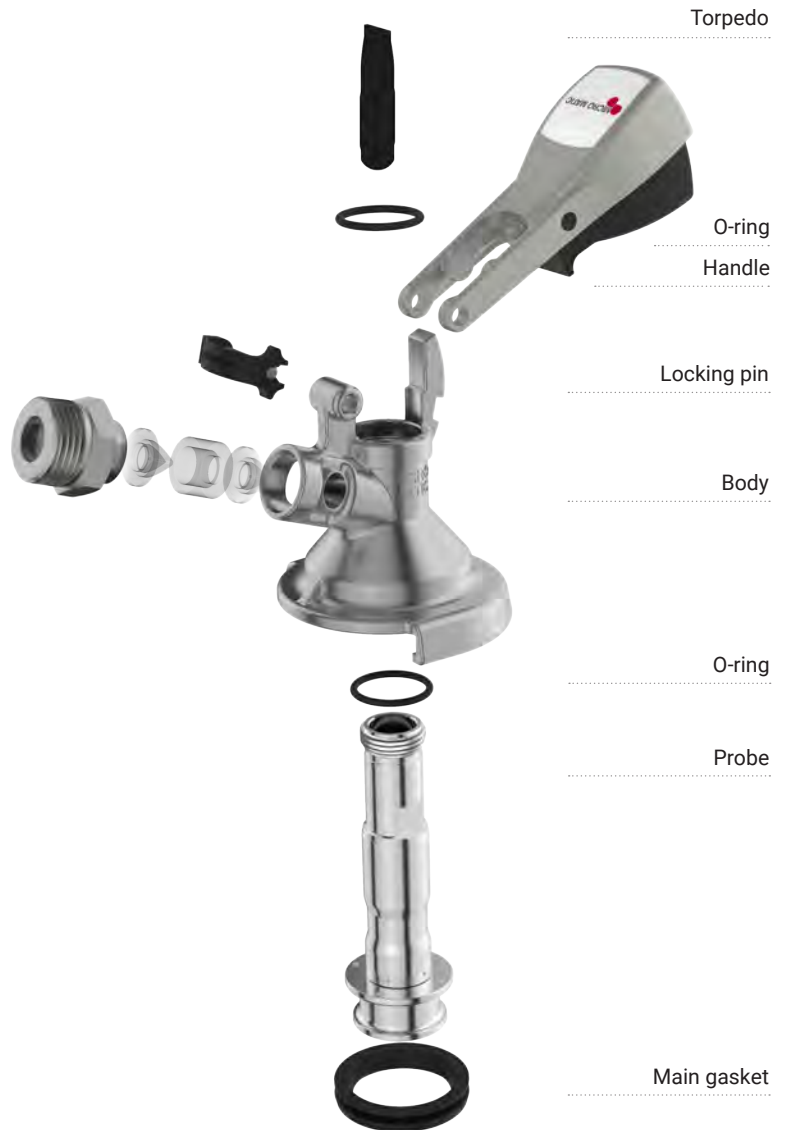


All dispense heads in brass are tin-nickel plated to prevent corrosion

HIGHLIGHTS

- Great opportunities for individually branded labels on the handle to customize the dispense head
- Long-term durability of the handle due to stainless steel and POM lower part
- Stainless steel or tin-nickel plated brass - the choice of the customer
- Long-term durability
- Convenience in use
- A high performance of the main gasket
- Body design and surface finish of high quality

PARTS



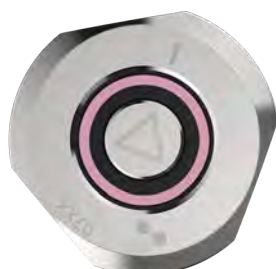
SPECIFICATIONS

Item No.	Thread CO ₂	Thread Beer	NRV in probe
3A913CA00000	3/4"	5/8"	Torpedo
4A533CA00000	1/2"	1/2"	Torpedo
5A120CC00000 (serial, S/S)	5/8"	5/8"	None

Other variants are available on request

SAFETY COUPLERS

G-SYSTEM



PARTS



HIGHLIGHTS

- Single O-ring construction
- Unrestricted CO₂ flow
- Degassing / anti splash handling
- Full range of hygienic connections

DISPENSE HEADS

G-SYSTEM



All dispense heads in brass are tin-nickel plated to prevent corrosion

HIGHLIGHTS

- Great opportunities for individually branded labels on the handle to customize the dispense head
- Long-term durability of the handle due to stainless steel and POM lower part
- Stainless steel or tin-nickel plated brass - the choice of the customer
- Long-term durability
- Convenience in use
- A high performance of the main gasket
- Body design and surface finish of high quality

PARTS



SPECIFICATIONS

Item No.	Thread CO ₂	Thread Beer	NRV in probe
7G112CA00000 (flex seal)	1/2"	1/2"	Ball and retainer
4G412CA00001	1/2"	1/2"	Ball and retainer
5G337CC00001 (S/S)	1/2"	1/2"	Torpedo

Other variants are available on request

M-SYSTEM



PARTS



HIGHLIGHTS

- Single O-ring construction
- Unrestricted CO₂ flow
- Degassing / anti splash handling
- Full range of hygienic connections

DISPENSE HEADS

M-SYSTEM

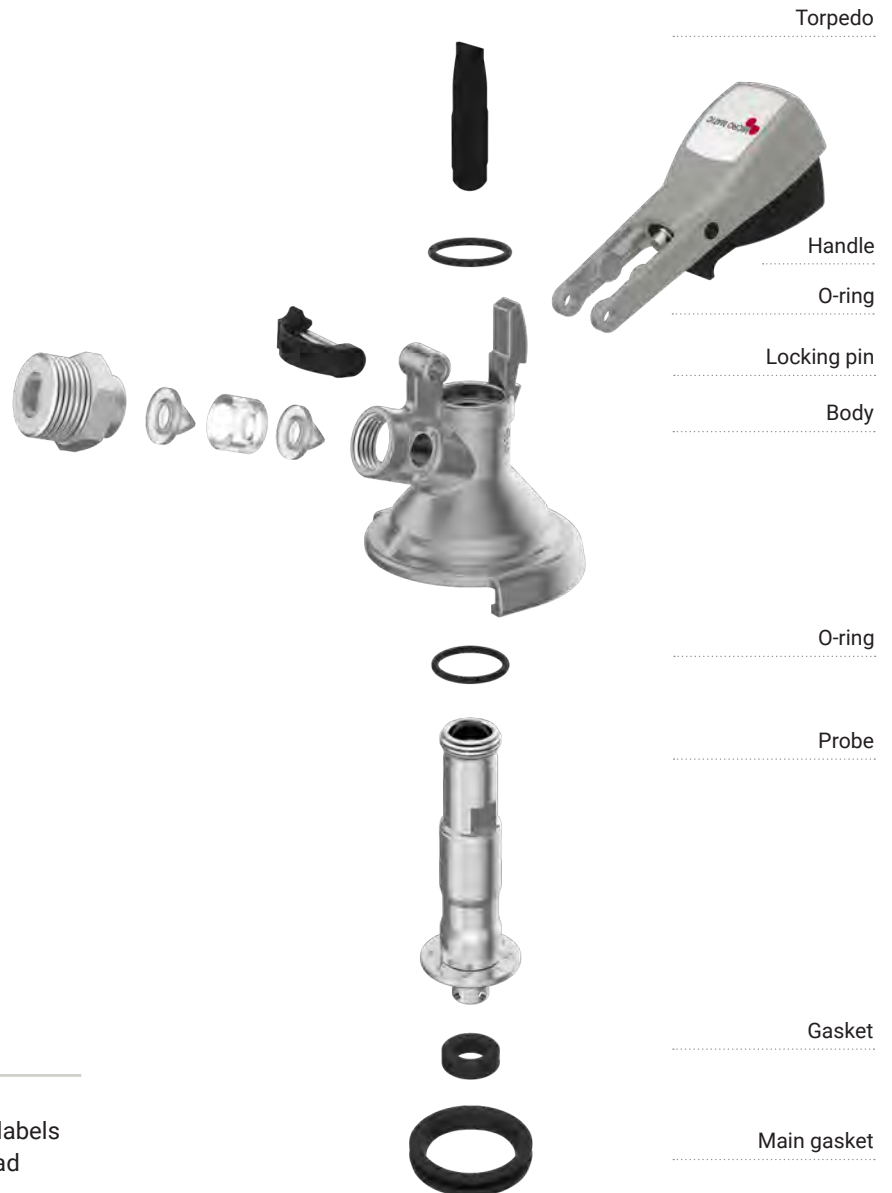


All dispense heads in brass are tin-nickel plated to prevent corrosion

HIGHLIGHTS

- Great opportunities for individually branded labels on the handle to customize the dispense head
- Long-term durability of the handle due to stainless steel and POM lower part
- Stainless steel or tin-nickel plated brass - the choice of the customer
- Long-term durability
- Convenience in use
- A high performance of the main gasket
- Body design and surface finish of high quality

PARTS



SPECIFICATIONS

Item No.	Thread CO ₂	Thread Beer	NRV in probe
3M973CA00000	3/4"	5/8"	Torpedo
4M113CA00000	1/2"	1/2"	Torpedo
5M223CC00000 (S/S)	1/2"	1/2"	Torpedo

Other variants are available on request

SAFETY COUPLERS

S-SYSTEM



PARTS



HIGHLIGHTS

- Single O-ring construction
- Unrestricted CO₂ flow
- Full range of hygienic connections
- Anti splash handling due to separation of CO₂ and beer during activation

DISPENSE HEADS

S-SYSTEM



All dispense heads in brass are tin-nickel plated to prevent corrosion

HIGHLIGHTS

- Great opportunities for individually branded labels on the handle to customize the dispense head
- Long-term durability of the handle due to stainless steel and POM lower part
- Stainless steel or tin-nickel plated brass - the choice of the customer
- Long-term durability
- Convenience in use
- A high performance of the main gasket
- Body design and surface finish of high quality

PARTS



SPECIFICATIONS

Item No.	Thread CO ₂	Thread Beer	NRV in probe
4S113CA00000	1/2"	1/2"	Torpedo
3S9A3CA00000	3/4"	5/8"	Torpedo
5S112CC00000 (S/S)	1/2"	1/2"	Ball and retainer

Other variants are available on request

SAFETY COUPLERS

D-SYSTEM



PARTS



HIGHLIGHTS

- Single O-ring construction
- Unrestricted CO₂ flow
- Full range of hygienic connections
- Anti splash handling due to separation of CO₂ and beer during activation

DISPENSE HEADS

D-SYSTEM



All dispense heads in brass are tin-nickel plated to prevent corrosion

HIGHLIGHTS

- Great opportunities for individually branded labels on the handle to customize the dispense head
- Long-term durability of the handle due to stainless steel and POM lower part
- Stainless steel or tin-nickel plated brass - the choice of the customer
- Long-term durability
- Convenience in use
- A high performance of the main gasket
- Body design and surface finish of high quality

PARTS



SPECIFICATIONS

Item No.	Thread CO ₂	Thread Beer	NRV in probe
4D233CA00000	1/2"	5/8"	Torpedo and retainer ring
D843CC00000 (S/S)	1/2"	1/2"	Torpedo
3D142CA00000	5/8"	5/8"	Ball and retainer

Other variants are available on request

DISPENSE HEADS

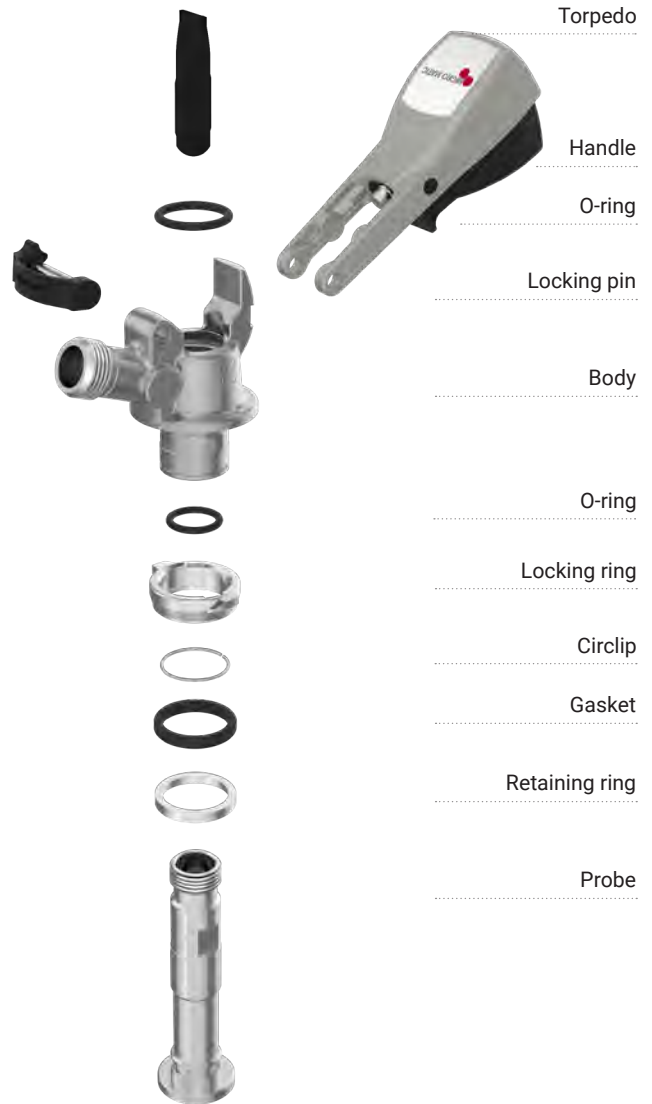
U-SYSTEM



All dispense heads in brass are tin-nickel plated to prevent corrosion



PARTS



HIGHLIGHTS

- Great opportunities for individually branded labels on the handle to customize the dispense head
- Long-term durability of the handle due to stainless steel and POM lower part
- Stainless steel or tin-nickel plated brass - the choice of the customer
- Long-term durability
- Convenience in use
- A high performance of the main gasket
- Body design and surface finish of high quality

SPECIFICATIONS

Item No.	Thread CO ₂	Thread Beer	NRV in probe
8UB34CA00000	1/2"	1/2"	NRV with rubber nose and retaining ring
8U710CA00000	5/8"	5/8"	None

Other variants are available on request

DISPENSE HEADS

L-SYSTEM



All dispense heads in brass are tin-nickel plated to prevent corrosion



HIGHLIGHTS

- Great opportunities for individually branded labels on the handle to customize the dispense head
- Long-term durability of the handle due to stainless steel and POM lower part
- Stainless steel or tin-nickel plated brass - the choice of the customer
- Long-term durability
- Convenience in use
- A high performance of the main gasket
- Body design and surface finish of high quality

PARTS



SPECIFICATIONS

Item No.	Thread CO ₂	Thread Soft Drink	NRV in probe
4L696CA00000	1/2"	1/2"	NRV, spring and retaining ring

Other variants are available on request

DISPENSE HEADS

DISPENSE HEAD FOR KEYKEG WITH INNOVATIVE DEGASSING FEATURE

Micro Matic has, in close co-operation with KeyKeg, developed a new dispense head for the KeyKeg product range which makes it even **safer, quicker and more convenient** for you to use the market leading one-way system.

This new innovative solution marks the first time KeyKeg dispense couplers will be able to dispense with pressure up to 4.1 bar, instead of 3.5 bar, while affording users the option to vent KeyKegs quickly and easily with the flip of a switch.

- **Convenient in use:** Degassing/venting function integrated
- **Safe in use:** PRV function integrated (4.1 bar/60 PSI)
- **Quick in use:** Degassing of empty keg takes only 20 sec.
Hygienic, no beer splash
- **No special tool** needed for degassing





SAFETY COUPLERS

CONNECTIONS

BEER STRAIGHT CONNECTIONS

Item No.	Description	Outside Diameter	Inside Diameter
405-502	Stainless steel	7.2 mm	Ø 5 mm
405-503	Stainless steel	8.2 mm	Ø 6 mm
405-504	Stainless steel	9.2 mm	Ø 7 mm



405-503

CO₂ STRAIGHT CONNECTIONS

Item No.	Description	Outside Diameter	Inside Diameter
405-507	Stainless steel	4.2 mm	Ø 2 mm
405-508	Stainless steel	6.2 mm	Ø 4 mm
405-509	Stainless steel	7.2 mm	Ø 5 mm



405-509

BEER 90° CONNECTIONS

Item No.	Description	Outside Diameter	Inside Diameter
405-552	Stainless steel	8.2 mm	Ø 6 mm
405-553	Stainless steel	9.2 mm	Ø 7 mm



405-552

BEER PUSH-IN CONNECTIONS

Item No.	Description	Inside Diameter
703-805	POM	(3/8") 9.3 mm
703-806	POM	(5/16") 8.0 mm
703-807	POM	10.0 mm



703-805

CO₂ PUSH-IN CONNECTIONS

Item No.	Description	Inside Diameter
703-858	POM	(3/8") 9.3 mm
703-859	POM	(5/16") 8.0 mm
703-860	POM	10.0 mm



703-858

SIGHT GLASS DOUBLE NRV

Item No.	Description	Inside Diameter
703-853	Brass Tin/Ni plated	(3/4") 19.0 mm



703-853

THE CO₂ CONNECTIONS CAN ALSO BE USED FOR FlexiDraft™ DISPENSE HEADS

DISPENSE HEADS

CONNECTIONS

CO₂ CONNECTIONS

Micro Matic offers a large selection of various CO₂ connections in tin-nickel plated brass. The shown models are just a small selection - for special requirements ask your sales contact.

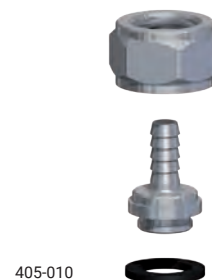
Item No.	ID	OD	Thread	Options
405-028, Brass Tin/Ni plated	6 mm	9 mm	1/2" BSP	Wing nut, Brass Tin/Ni plated
405-001, Brass Tin/Ni plated	4 mm	8 mm	1/2" BSP	Hexagonal nut, Brass Tin/Ni plated
405-020, Brass Tin/Ni plated	5 mm	7 mm	5/8" BSP	Hexagonal nut, Brass Tin/Ni plated



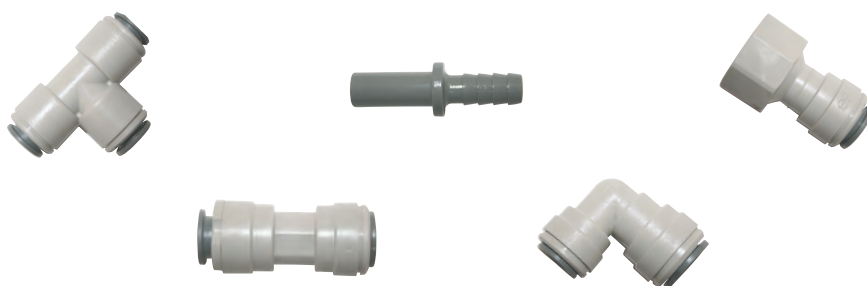
BEER CONNECTIONS

Micro Matic offers a large selection of various beer connections in stainless steel. The shown models are just a small selection - for special requirements ask your sales contact.

Item No.	ID	OD	Thread	Options
405-009, S/S	6 mm	8.3 mm	1/2" BSP	Hexagonal nut, Brass Tin/Ni plated
401-781, S/S	6 mm	8 mm	1/2" BSP	Hexagonal nut, Brass Tin/Ni plated
405-010, S/S	5 mm	7.5 mm	5/8" BSP	Hexagonal nut, Brass Tin/Ni plated
405-013, S/S	7 mm	9.5 mm	5/8" BSP	Hexagonal nut, Brass Tin/Ni plated
405-016, S/S	8.5 mm	10.5 mm	5/8" BSP	Hexagonal nut, Brass Tin/Ni plated



PUSH-IN FITTINGS



Complete range of
John Guest
connections available

STAINLESS STEEL O-CLIP - STEPLESS

Available from 5.8 - 7.0 mm to 15.3 - 18.5 mm.



DISPENSE HEADS

SPECIAL VERSIONS

MANUAL FILLING HEADS

Micro Matic offers a high quality manual filling heads for simple filling of beer on kegs - easy to connect directly on the keg for prompt filling of beer.

Contact areas between the liquid and the filling head are produced in stainless steel for maximum hygiene.

Item No.	System
214-001	A
214-002	G
214-003	M
214-004	S
214-006	D



LABORATORY DISPENSE HEADS

The laboratory dispense heads for sampling comprise Micro Matic standard models like flat, combi and well types with a tin/nickel coated brass body and a stainless steel probe. CO₂ inlet through a 4, 7 or 10 mm connection. A tube of stainless steel (external diameter 5 mm) including shut-off valve (stainless steel) is fitted on the stainless steel probe for beer sampling.

Autoclaving is possible for all parts, including O-ring, main gaskets and plastic (POM) handle (white color).

Item No.	System
214-015	A
214-012	G
214-014	M
214-013	S
214-023	D
214-016	U



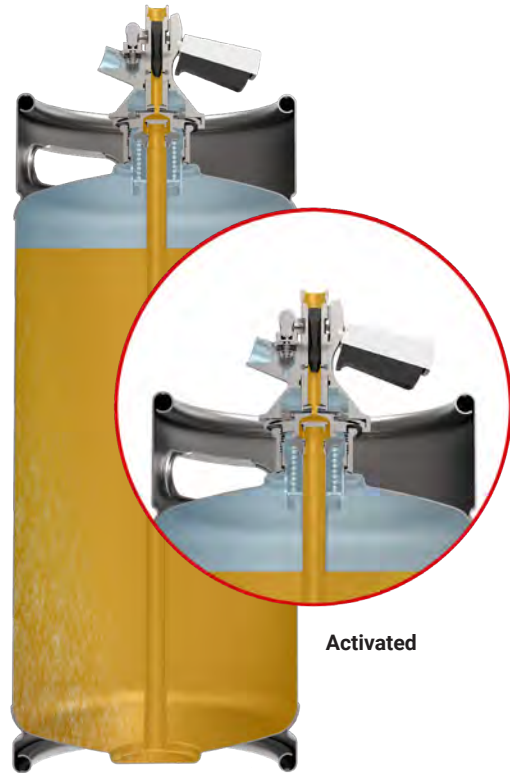
DISPENSE HEADS

FLOW DIAGRAMS

SAFETY COUPLERS FLAT TYPE



Deactivated

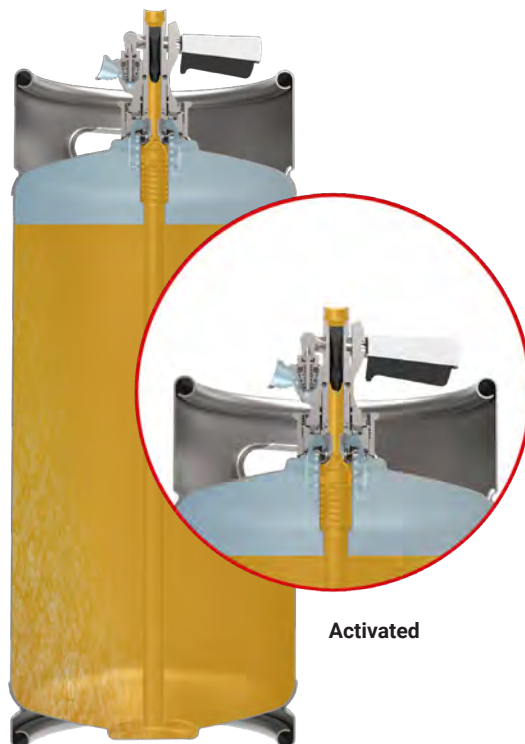


Activated

SAFETY COUPLERS WELL TYPE



Deactivated



Activated

QuickFit™

SIMPLE & SAFER THAN EVER

PUSH
CLICK
DONE



QUICKFIT™

INNOVATIVE FEATURES SETTING NEW STANDARDS

With BAM certified quality, superior safety and cutting-edge features, QuickFit™ is a revolutionary CO₂ system down to the last detail.

QuickFit™ is a **game-changing system** that enables you to change CO₂ without the use of tools.

Changing a CO₂ cylinder has never been this **quick, easy and safe**. The intuitive operation prevents mistakes and requires no maintenance.

Simply push to hear the click – and you're done!

QuickFit™ Regulator

- Red/green indicator shows when the CO₂ cylinder needs to be replaced
- Ergonomic and lockable pressure adjustment handle
- Tough design prevents damages

QuickFit™ Valve

- Fits in most common CO₂ cylinder types
- Built-in burst disc and residual pressure valve
- The valve automatically opens when the regulator is mounted and closes when the regulator is dismantled

QuickFit™ Adapter

- For connection to wall-mounted regulators with high pressure hose
- Ergonomic design for easy operation

"The best thing about QuickFit™ is that you don't need any tools. Now everyone can change CO₂ and feel safe about it" - Frederik, Bartender, Café Rømer



QuickFit™ Regulator



QuickFit™ Valve



QuickFit™ Adapter

Certified by
 BAM

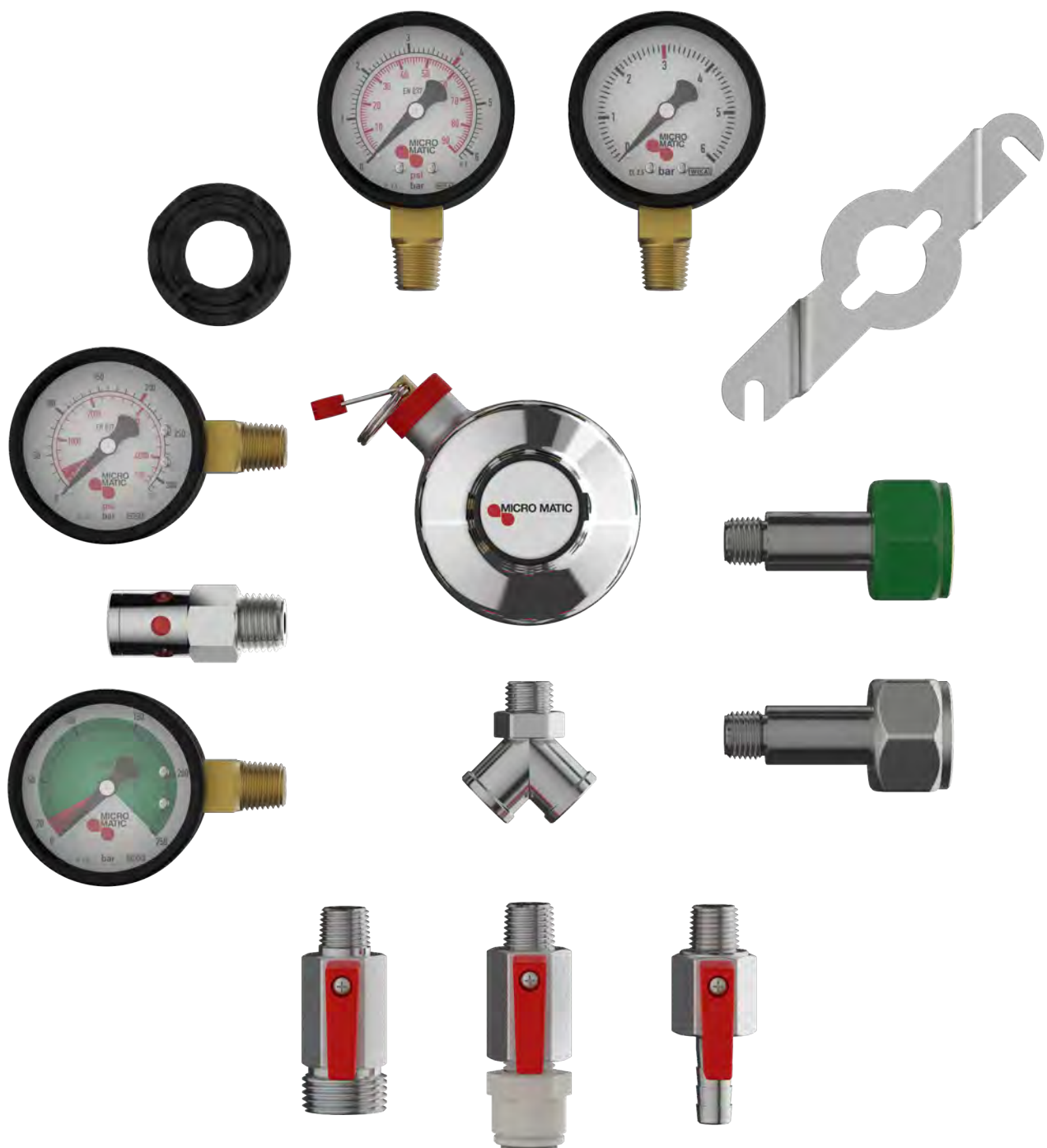


REGULATORS

MODULAR DESIGN FOR ALL CUSTOMISED SOLUTIONS

Our regulators have been designed to control the flow of CO₂, N₂ and mixed gasses for all beverages such as beer and soft drinks.

The regulators from the Micro Matic Premium Series **guarantee reliable performance** and the stable pressure and flow conditions ensure **excellent pressure setting at any time**. All regulators meet technical demands in all markets. Pressure relief valves, shut-off valves and pressure gauges meet the international requirements for optimum in-trade operation.

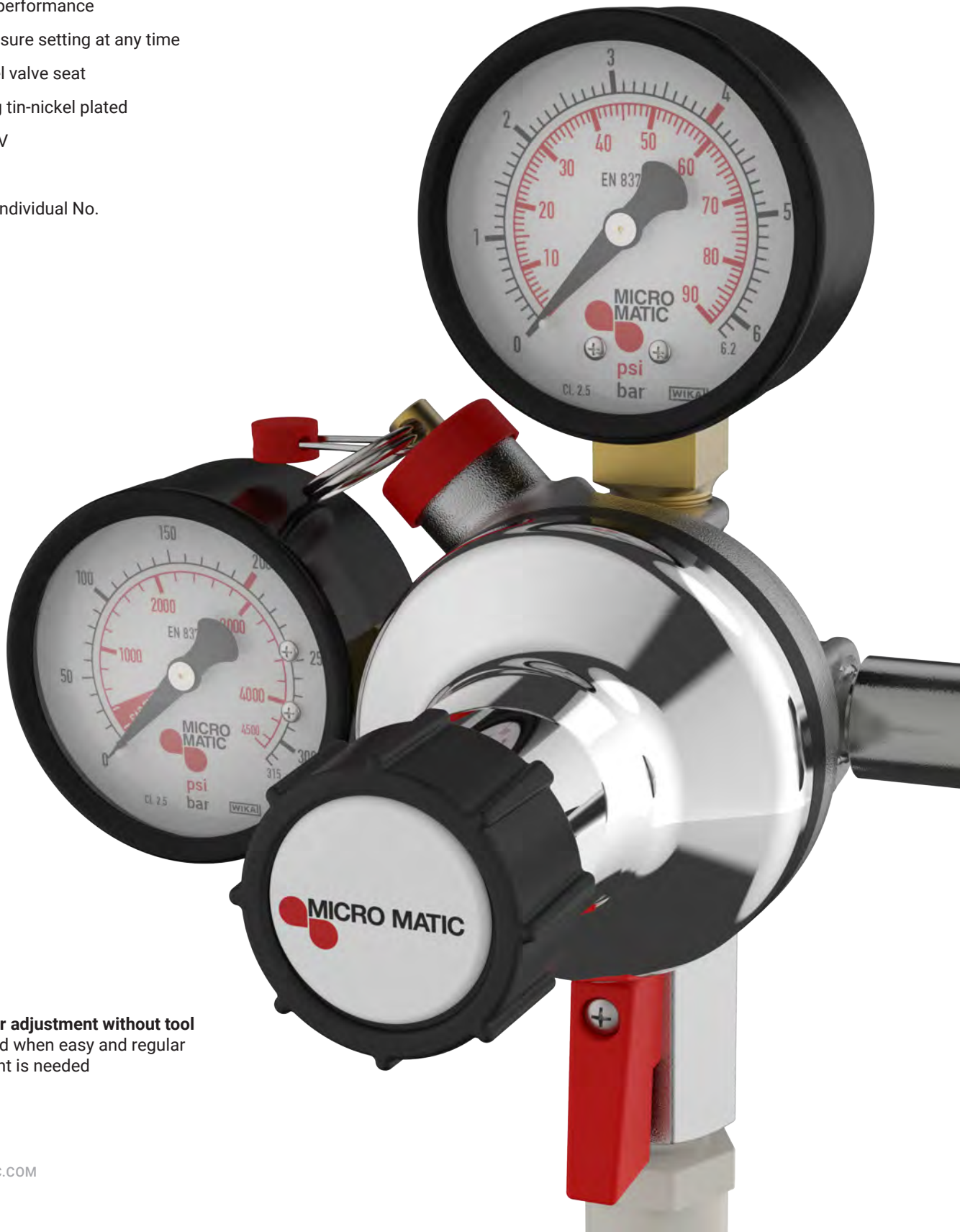


REGULATORS

PREMIUMPLUS REGULATORS

HIGHLIGHTS

- Reliable high performance
- Excellent pressure setting at any time
- Stainless steel valve seat
- Brass housing tin-nickel plated
- Integrated PRV
- SK approval
- Traceability - individual No.

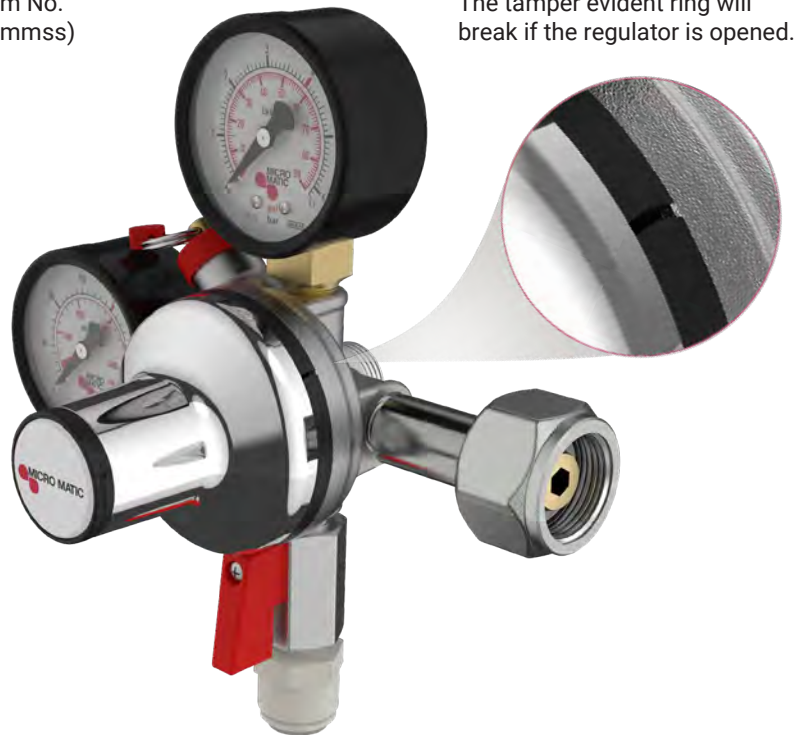


Handle for adjustment without tool
To be used when easy and regular adjustment is needed



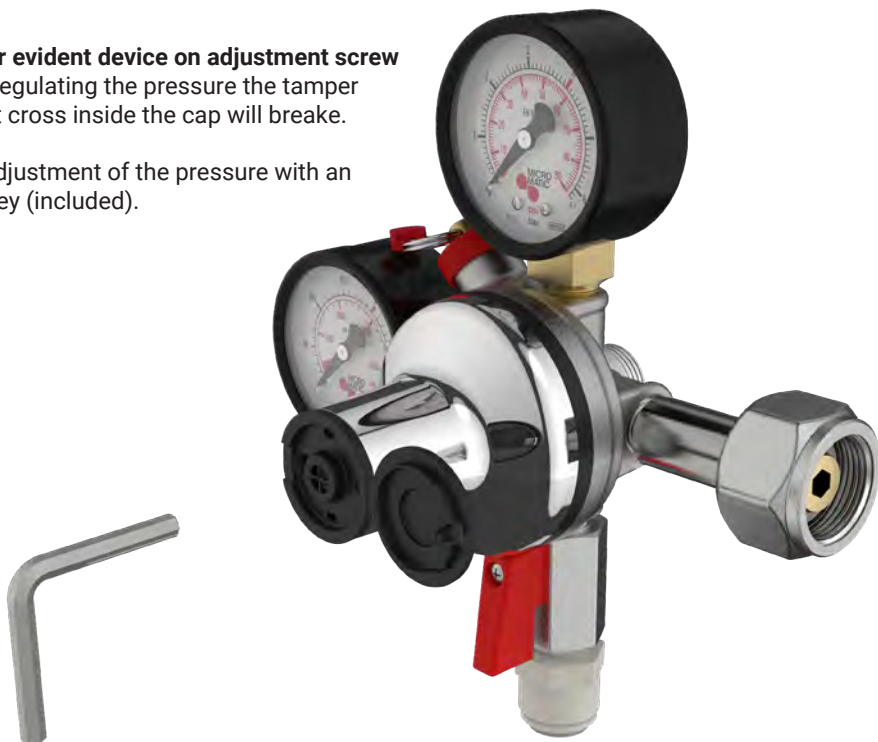
Traceability
 Serial and item No.
 (YYMMDDhhmmss)

Tamper evident ring
 The tamper evident ring will
 break if the regulator is opened.



Tamper evident device on adjustment screw
 When regulating the pressure the tamper
 evident cross inside the cap will break.

Easy adjustment of the pressure with an
 Allen key (included).



PREMIUMPLUS REGULATORS

CO₂ & N₂ PRIMARY

The regulators from the Micro Matic Premium Series guarantee reliable performance and the stable pressure and flow conditions ensure excellent pressure setting at any time. All regulators meet technical demands in all markets.

Pressure relief valves, shut-off valves and pressure gauges meet the international requirements for optimum in-trade operation.

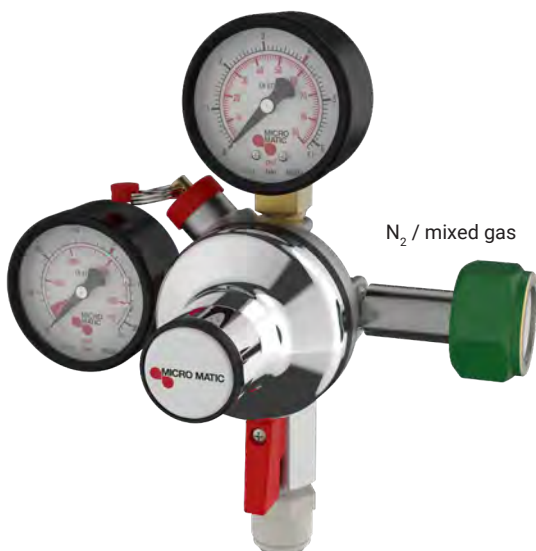
Regulator batteries are available for CO₂ and N₂/mixed gas and with various pressure combinations on request. Batteries are available for local assembly or pre-mounted.

FEATURES

- High performance
- Accurate pressure control
- Integrated pressure relief valve
- Stainless steel valve seat
- Tin-nickel plated brass housings
- SK approval
- Individually numbered for traceability
- Adjustment screw protected by tamper evident cap
- Tamper evident cap breaks to access adjustment screw
- Allen key adjustment
- Tamper evident ring for disassembly



CO₂ regulator



N₂ / mixed gas

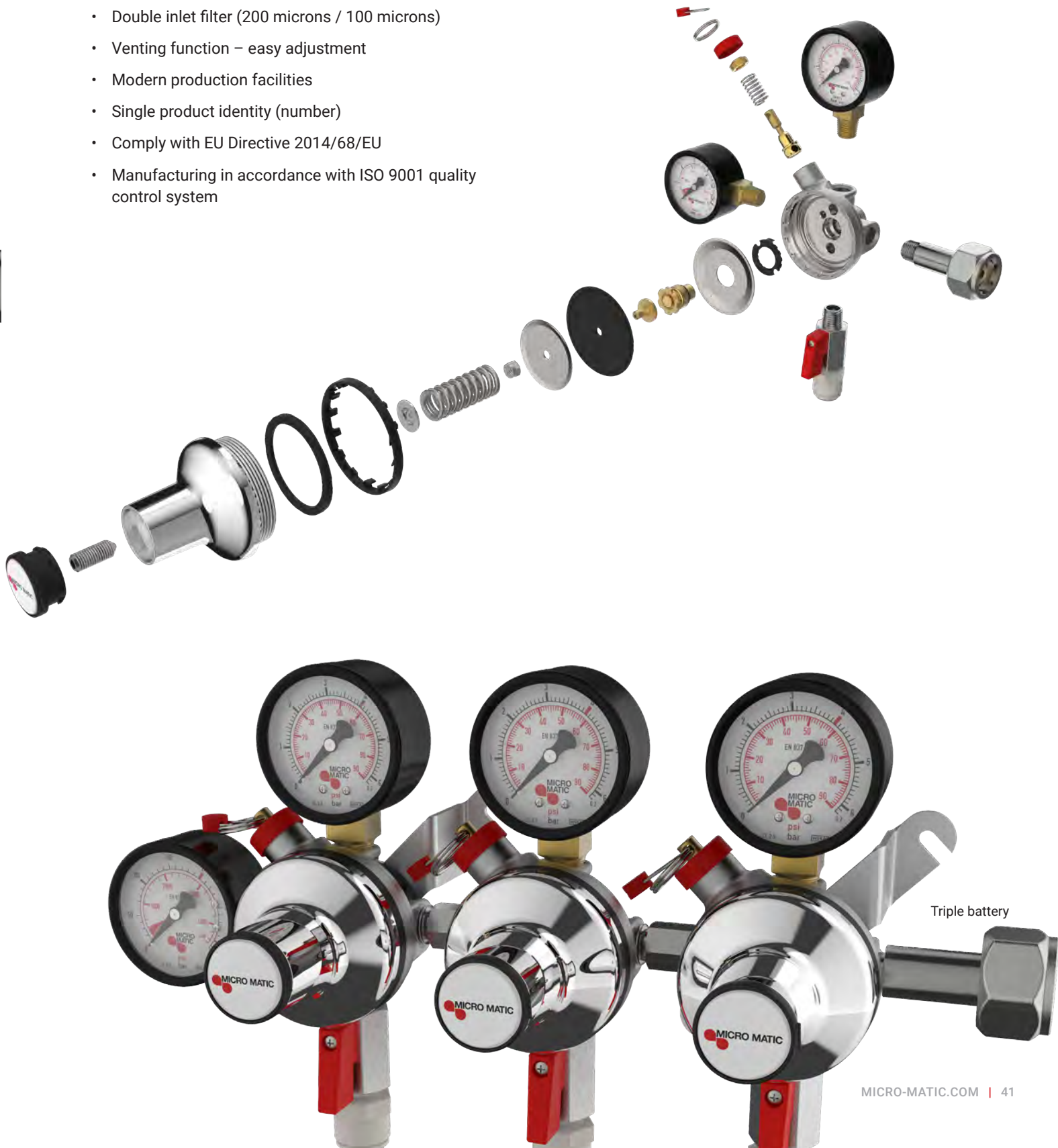


Double battery

BENEFITS

- High capacity CO₂ flow 180 L/min peak 100 L/min continuous
- Stable CO₂ pressure from full to empty cylinder
- Double inlet filter (200 microns / 100 microns)
- Venting function – easy adjustment
- Modern production facilities
- Single product identity (number)
- Comply with EU Directive 2014/68/EU
- Manufacturing in accordance with ISO 9001 quality control system

PARTS



PREMIUMPLUS REGULATORS

CO₂ & N₂ SECONDARY

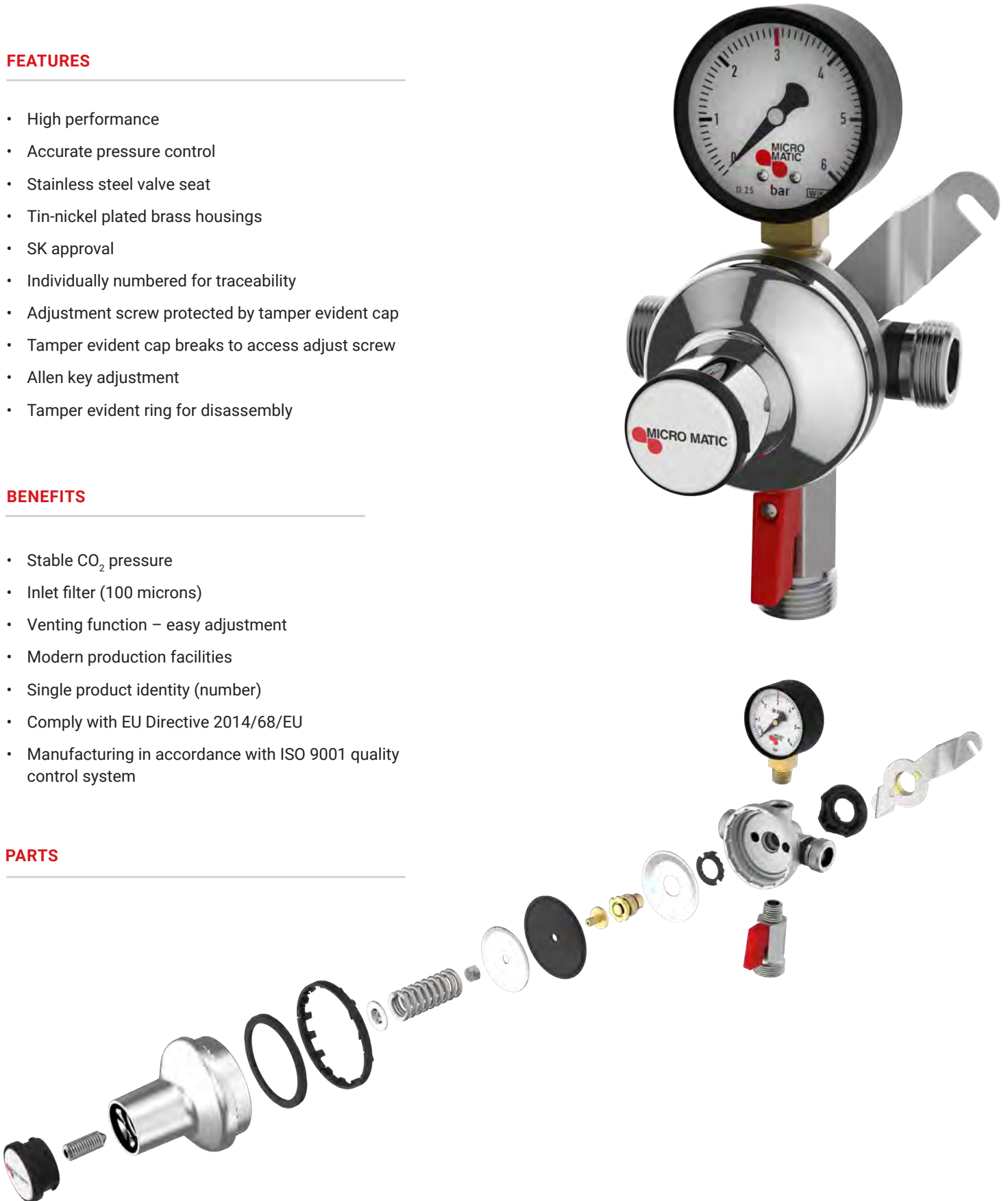
FEATURES

- High performance
- Accurate pressure control
- Stainless steel valve seat
- Tin-nickel plated brass housings
- SK approval
- Individually numbered for traceability
- Adjustment screw protected by tamper evident cap
- Tamper evident cap breaks to access adjust screw
- Allen key adjustment
- Tamper evident ring for disassembly

BENEFITS

- Stable CO₂ pressure
- Inlet filter (100 microns)
- Venting function – easy adjustment
- Modern production facilities
- Single product identity (number)
- Comply with EU Directive 2014/68/EU
- Manufacturing in accordance with ISO 9001 quality control system

PARTS



REGULATORS

COMPACT SECONDARY

HIGHLIGHTS

- Compact design
- Easy to adjust handle
- Balanced regulator
- "Pull - adjust - lock" movement secures the set pressure
- Integrated wall bracket and shut-off valve
- Separate tamper evident device available, see page 45



SPECIFICATIONS

Item No.	Bar	Inlet	Outlet
301010101101	0-3.1 bar	2 x 3/8" JG	SOV + 3/8" JG
301010101102	0-45 PSI	2 x 3/8" JG	SOV + 3/8" JG
301010101103	0-4 bar	2 x 3/8" JG	SOV + 3/8" JG



PREMIUMPLUS REGULATORS

ACCESSORIES

WALL BRACKET FOR PREMIUMPLUS

- Less risk of regulator damage
- Less risk of leakage
- Minimum of repairs
- Longer life time of the regulator
- Good overview of installation

Item No.	Description
791-019	Wall bracket incl. nut



WALL BRACKET LOCK FOR PREMIUMPLUS

- Fixation lock for wall bracket
- Prevent unintended rotation of regulator

Item No.	Description
107-783	Wall bracket lock



PRESSURE ADJUSTMENT HANDLE FOR PREMIUMPLUS

- Handle for adjustment without tool
- To be used when easy and regular adjustment is needed

Item No.	Description
107-870	Pressure adjustment handle for PremiumPLUS regulator



REGULATORS

ACCESSORIES

GAUGE PROTECTION FOR PREMIUMPLUS

Item No.	Description
792-326	Suitable for both primary and secondary PremiumPLUS regulators with 50 mm gauges



792-326

TAMPER EVIDENT DEVICE FOR PREMIUMPLUS

Item No.	Description
791-094	Suitable for both primary and secondary PremiumPLUS regulators



791-094

TAMPER EVIDENT DEVICE FOR COMPACT

Item No.	Description
112-747	Suitable for secondary Compact regulators



112-747

REGULATORS

ACCESSORIES

SPANNER

Item No.	Description
1900030	Ring spanner for N ₂ /CO ₂ - double ring key 30/32 mm



CYLINDER HOLDER

Item No.	Description
1900064	Metal, max Ø 150 mm cylinder



MANIFOLDS

Item No.	Lines	Connection
1306929	2 lines	SOV + 7 ID nozzle
1307030	3 lines	SOV + 7 ID nozzle
1307127	4 lines	SOV + 7 ID nozzle

Threaded and JG connections are also available.



REGULATORS

HIGH PRESSURE HOSES

The inner tube is made of thermoplastic polyester elastomers with a high level of chemical compatibility.

The reinforcement is brass coated steel braid and the cover thermoplastic polyurethane which gives the high pressure hose a very long durability.



SPECIFICATIONS

Item No.	Description	Gas	Length	Connections
775-002	High pressure hose	CO ₂	1.3 m	W 21.8 x W 21.8
775-003	High pressure hose	CO ₂	1.2 m	W 21.8 x 1/4" NPT



FONTS

STANDARD DESIGN FONTS FROM MICRO MATIC

Whatever style or mood you are looking to create, our comprehensive range of standard fonts offers you a **fantastic variety of options**.

Enjoy exploring them and let yourself be inspired.





Beer

BOTTLED BEER

DOMESTIC

- NOSTRUM...3,11 \$
MICRO MATIC BREWERY
A HINT OF SPICY TEE, 4,6%
- EXODUS.....2,78 \$
MICRO MATIC BREWERY
SLIGHTLY SWEET, 4,6%
- LIGHT HOUSE...1,89 \$
MICRO MATIC BREWERY
DRINK & DRIVE, 0,1%

IMPORTS

- CUMULUS.....2,89 \$
MICRO MATIC BREWERY
SEARCH & FIND, 4,6%
- BLONDE MAGNA...2,99 \$
MICRO MATIC BREWERY
LIGHT & MILD, 4,6%

CIDER

- FLOWER POWER...2,39 \$

PREMIUM

- PILSNER.....2,99 \$
MICRO MATIC BREWERY
TASTE OF SUMMER, 4,6%
- IRISH RED.....3,11 \$
MICRO MATIC BREWERY
HINTS OF SWEET MALT, 4,6%
- PALE ALE.....3,39 \$
MICRO MATIC BREWERY
PLENTY OF HOPS, 5,6%

SPECIALTY

- WHEAT.....3,39 \$
MICRO MATIC BREWERY
UNFILTERED PLEASURE, 4,7%
- STOUT.....4,11 \$
MICRO MATIC BREWERY
A HINT OF CHOKOLATE, 7,2%
- GOLD.....3,89 \$
MICRO MATIC BREWERY
TASTE OF BREADY MALT, 5,4%



MICRO MATIC

COPENHAGEN TOWER



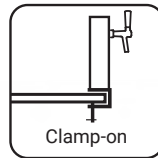
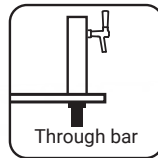
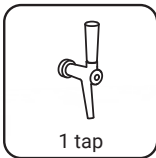
COPENHAGEN FONT AT A GLANCE

Funky and modern, our Copenhagen font series provides just the right combination of sharp good looks and effortless functionality. For trend-setters who demand that little extra.

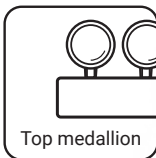
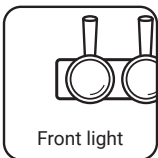
Available with variety of branding accessories the Copenhagen font allows you to create your own unique expression and to draw the attention of the customer.

SPECIFICATIONS

- Material:** Stainless steel, Zinc and Plastic
Shank thread: 1/2" or 5/8" BSP
Mounting: M60 through bar tube or clamp on bar
Body options: I-model



BRANDING OPTIONS



SURFACE OPTIONS



Chrome



PVD Gold



PVD Copper



Painted



MICRO MATIC

BYO FONT

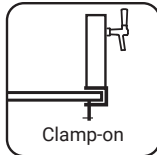
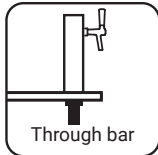
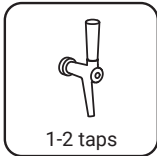
BYO FONT AT A GLANCE

Designed around a fixed central composite polymer core element, our BYO (Brand Your Own) series allows you to easily fit or change a wide range of different cover styles. Let your imagination run wild!

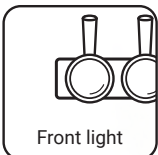
Similar customer exclusive designs can be developed within a short timeframe.

SPECIFICATIONS

- Material:** Resin (polyurethan)
Shank thread: 1/2" or 5/8" BSP
Mounting: 1½" BSP through bar tube or clamp on bar
Body options: I-model



BRANDING OPTIONS



SURFACE OPTIONS



Painted



MICRO MATIC

SATURN FONT

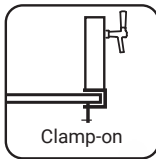
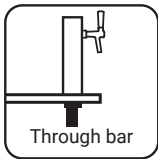
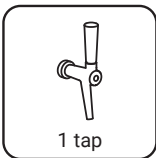
SATURN FONT AT A GLANCE

Chic and stylish for the most modern bar environments. Great looks add to point of sale appeal while cutting-edge technology ensures a perfect drinking experience, every time.

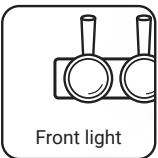
The innovative bezel edge lighting around the branding panel further enhances this attractively designed font.

SPECIFICATIONS

- Material:** Stainless steel
Shank thread: 1/2" or 5/8" BSP
Mounting: 1 1/2" BSP through bar tube or clamp on bar
Body options: I-model



BRANDING OPTIONS



SURFACE OPTIONS



Chrome

PVD Gold

PVD Copper

Brushed

Brushed Gold

Brushed Copper

Painted

MICRO MATIC

JULIA FONT




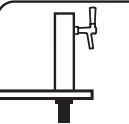
JULIA FONT AT A GLANCE

We wouldn't be true to our roots if we didn't offer you at least one example of chic Scandinavian style.

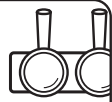

Understated elegance and pure functionality that is guaranteed to charm your customers.

SPECIFICATIONS

- Material:** Stainless steel and Aluminum
- Shank thread:** 1/2" or 5/8" BSP
- Mounting:** 2" BSP through bar tube
- Body options:** T and TT-model

 Illumination	 1-14 taps
 Kool-Rite™ Technology	 Through bar

BRANDING OPTIONS

 Front light	 Top medallion
--	--

SURFACE OPTIONS

						
Chrome	PVD Gold	PVD Copper	Brushed	Brushed Gold	Brushed Copper	Painted





MICRO MATIC

GENEVA FONT

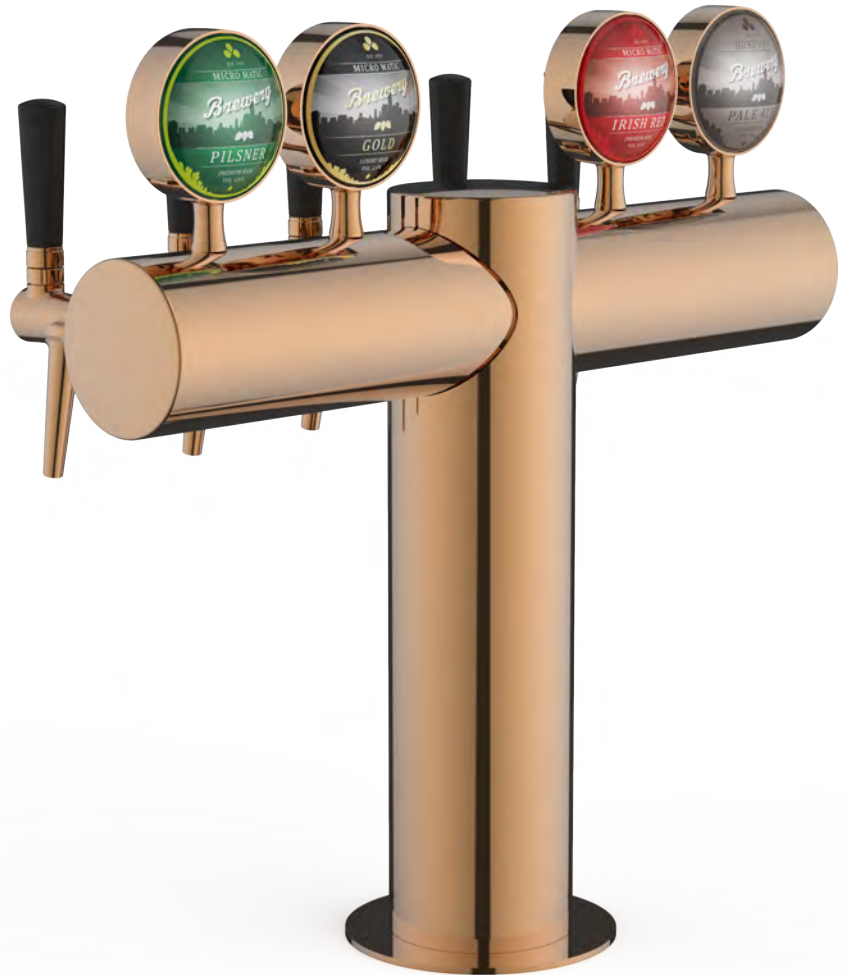
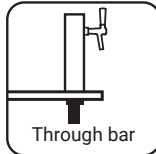
GENEVA FONT AT A GLANCE

What better way to serve the finest craft beers to your discerning clientele?

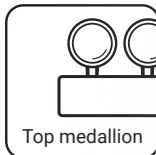
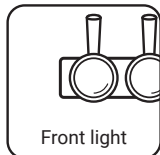
Our Geneva series shows you are as serious about how you pour your beers as you are about how they taste.

SPECIFICATIONS

- Material:** Stainless steel
Shank thread: 1/2" or 5/8" BSP
Mounting: 2" BSP through bar tube
Body options: T, TT & H-model



BRANDING OPTIONS



SURFACE OPTIONS



Chrome



PVD Gold



PVD Copper



Brushed



Brushed Gold



Brushed Copper



Painted

MICRO MATIC

VM-TOWER

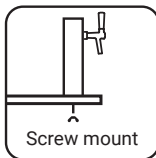
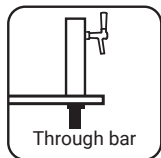
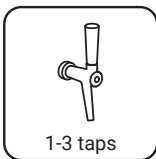
VM-TOWER FONT AT A GLANCE

For a bit of classy sophistication effortlessly mixed with chic café styling, our VM Tower series is the ideal solution.

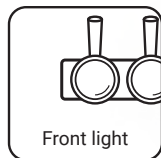
Point of sale appeal that everyone will feel at home with.

SPECIFICATIONS

- Material:** Stainless steel
- Shank thread:** 1/2" or 5/8" BSP
- Mounting:** 1½" BSP through bar tube or 4 x M5 screws
- Body options:** I-model



BRANDING OPTIONS



SURFACE OPTIONS



Chrome

PVD Gold

PVD Copper

Brushed

Brushed Gold

Brushed Copper

Painted

MICRO MATIC

LOTUS FONT

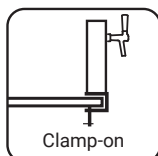
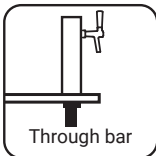
LOTUS FONT AT A GLANCE

An elegant font solution that is totally at home in traditional bar settings. The sleek lines complement restrained, stylish decor schemes, adding a classy note that will catch the eye.

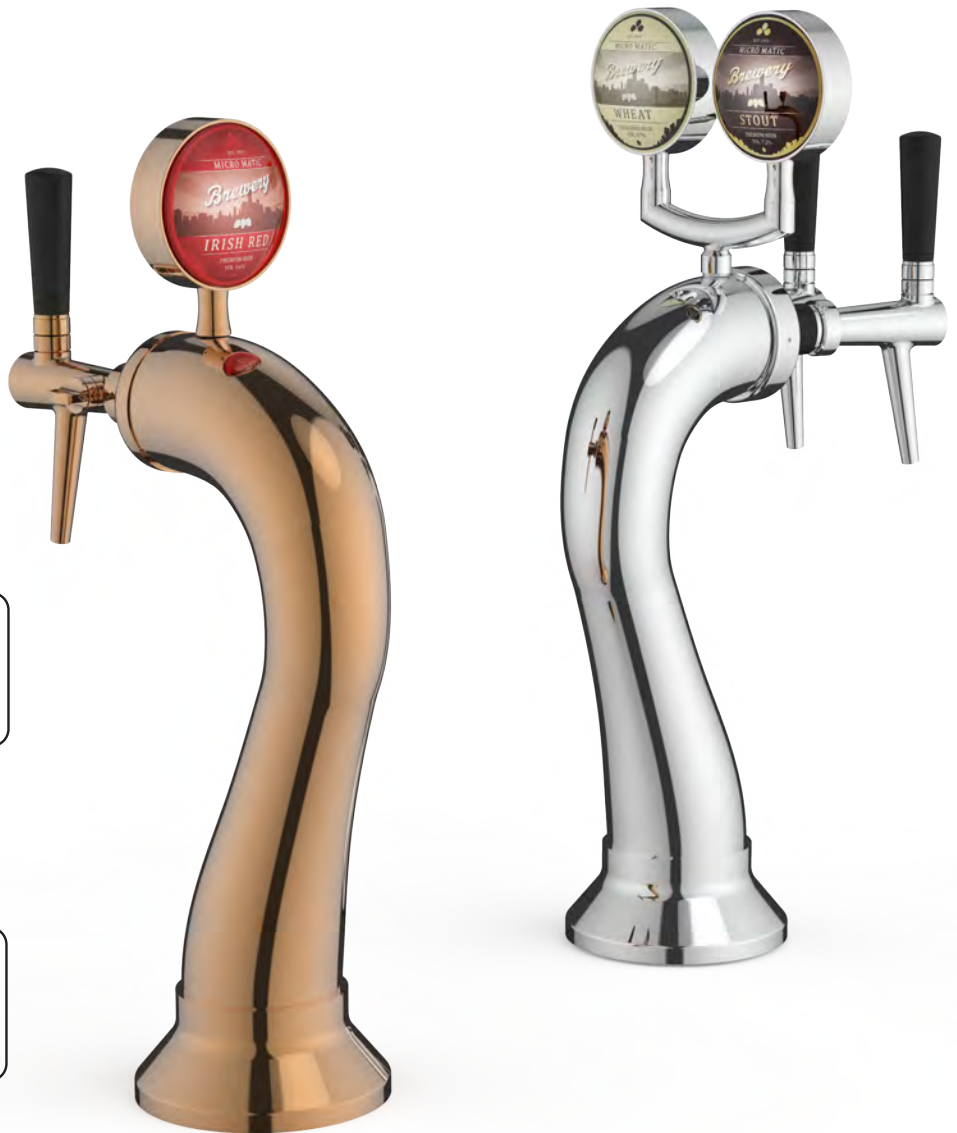
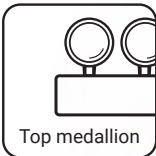
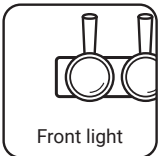
The Lotus font is often used for dispense of draft wines in addition to beers and ciders.

SPECIFICATIONS

- Material:** Stainless steel
Shank thread: 1/2" or 5/8" BSP
Mounting: 2" BSP through bar tube or clamp on bar
Body options: I, L & T-model



BRANDING OPTIONS



SURFACE OPTIONS



Chrome



PVD Gold



PVD Copper



Brushed



Brushed Gold



Brushed Copper



Painted



MICRO MATIC

KATRINE FONT

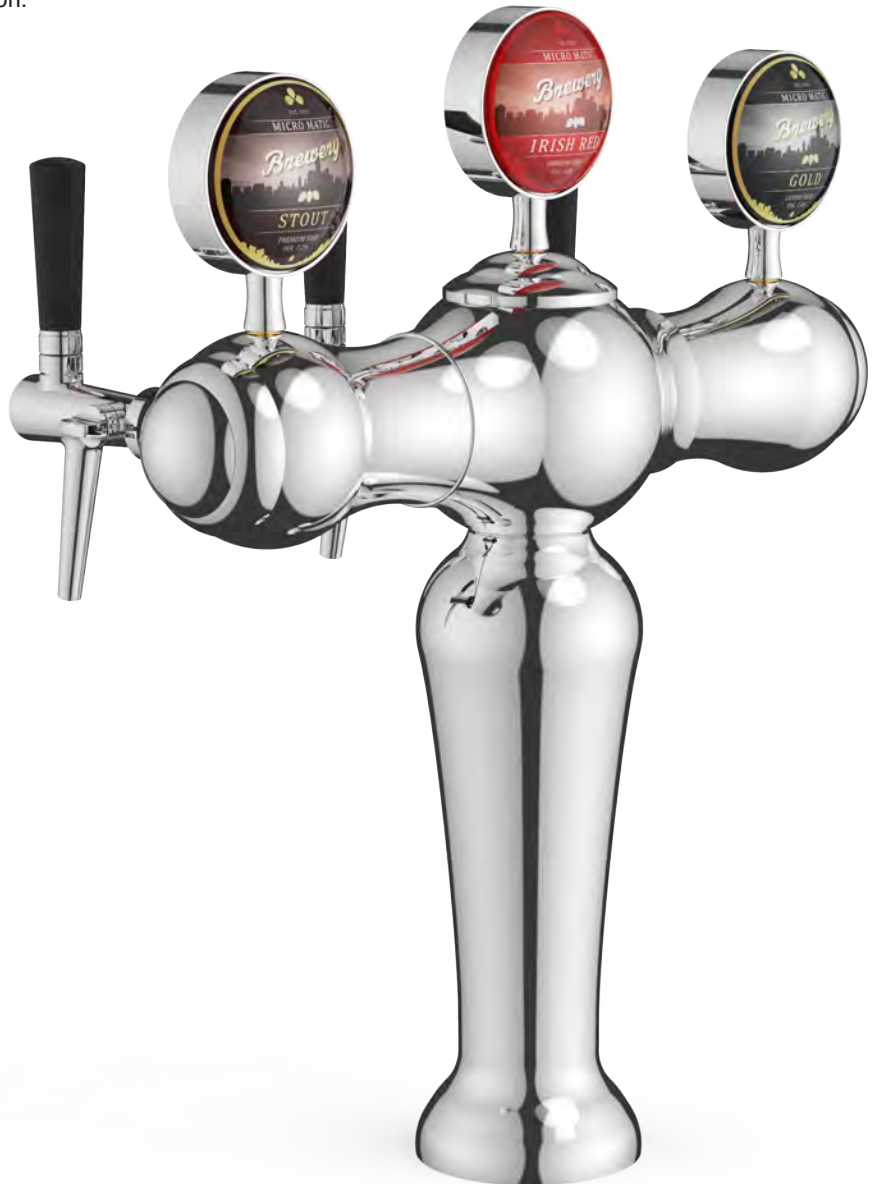
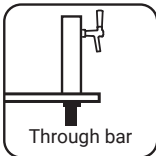
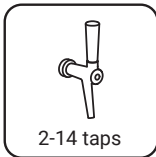
KATRINE FONT AT A GLANCE

A classic look for everything from Irish pubs to cosy neighborhood bars.

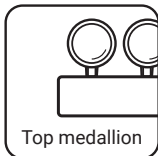
Choose a mahogany pillar for a real down-home look and add illuminated medallions to boost brand recognition.

SPECIFICATIONS

- Material:** Brass
Shank thread: 1/2" or 5/8" BSP
Mounting: 1½" BSP through bar tube
Body options: T and TT-model



BRANDING OPTIONS



SURFACE OPTIONS



Chrome



PVD Gold



PVD Copper



Brushed



Brushed Gold



Brushed Copper



Painted

MICRO MATIC

CAST IRON FONT

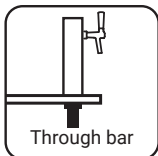
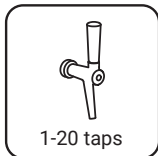
CAST IRON FONT AT A GLANCE

A rock hard image that is totally at home in bars and pubs styled in the contemporary industrial look. What better way to set off bare concrete, rusted steel or exposed ventilation pipes?

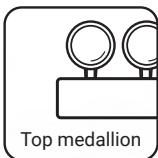
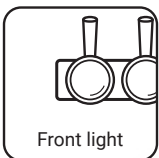
Effortlessly cool and available with up to 20 taps for a stunning visual effect - and faster service.

SPECIFICATIONS

- Material:** Casted iron
- Shank thread:** 1/2" or 5/8" BSP
- Mounting:** 2" BSP through bar tube
- Body options:** I, U, T, L and TT-model



BRANDING OPTIONS



SURFACE OPTIONS



Raw Iron



Painted



MICRO MATIC

TITAN FONT

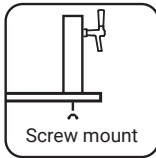
TITAN FONT AT A GLANCE

A font series designed for the homeland of social drinking and enjoyment: the traditional pub.

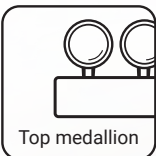
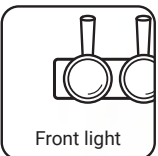
Classic good looks with a modern twist, plus the technology that ensures every beer will be memorable for all the right reasons.

SPECIFICATIONS

- Material:** Stainless steel
- Shank thread:** 1/2" or 5/8" BSP
- Mounting:** 4 x M8 screws (per pillar)
- Body options:** U, S, L, Y, T & TT-model



BRANDING OPTIONS



SURFACE OPTIONS



Chrome



PVD Gold



PVD Copper



Brushed



Brushed Gold



Brushed Copper



Painted

The Titan font is also available in Real Brass or Real Copper





MICRO MATIC

ALASKA FONT

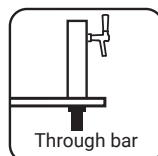
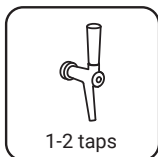
ALASKA FONT AT A GLANCE

When vibe is hot and the temperature rises, our Alaska font series is just the thing to chill out with.

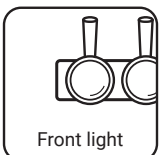
Über-cool, contemporary styling and functionality that supports the busiest environments.

SPECIFICATIONS

- Material:** Stainless steel and Aluminum
Shank thread: 1/2" or 5/8" BSP
Mounting: 2" BSP through bar tube
Body options: I-model



BRANDING OPTIONS



SURFACE OPTIONS



Chrome



PVD Gold



PVD Copper



Brushed



Brushed Gold



Brushed Copper



Painted



MICRO MATIC

BERLIN FONT

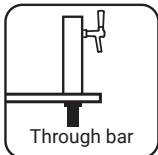
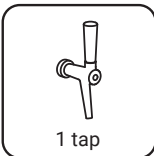
BERLIN FONT AT A GLANCE

Even if you're not serving the famous "Berliner Weisse" wheat beer with its unique sour flavour and raspberry or "Waldmeister" syrups, these bold and functional single-tap fonts are sure to catch the eye.

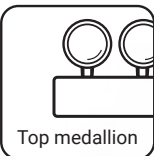
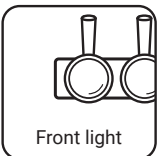
Choose a mid-mounted lens for subtle sophistication or say it loud with a top mounted medallion.

SPECIFICATIONS

- Material:** Stainless steel
Shank thread: 1/2" or 5/8" BSP
Mounting: 1 1/4" BSP through bar tube
Body options: I-model



BRANDING OPTIONS



SURFACE OPTIONS



Chrome



PVD Gold



PVD Copper



Brushed



Brushed Gold



Brushed Copper



Painted



MICRO MATIC

BIRMINGHAM FONT

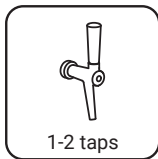
BIRMINGHAM FONT AT A GLANCE

With a choice of top or mid-mounted medallions - including an digital option - our Birmingham taps simple oozes class.

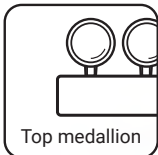
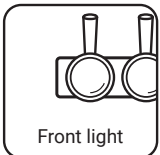
A full range of polished or brushed finishes, or your choice of paint colour, ensures that these fonts will complement any interior design scheme.

SPECIFICATIONS

- Material:** Stainless steel
Shank thread: 1/2" or 5/8" BSP
Mounting: 1 1/4" BSP through bar tube
Body options: I-model



BRANDING OPTIONS



SURFACE OPTIONS



Chrome



PVD Gold



PVD Copper



Brushed



Brushed Gold



Brushed Copper



Painted



MICRO MATIC

LONDON FONT

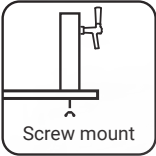
LONDON FONT AT A GLANCE

Inspired by the capital city of the spiritual home of the pub, our London font combines a trendy neo-industrial look with an impressive bar presence.

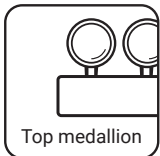
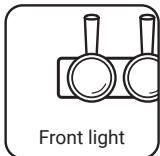
True to its namesake, it's the go-to destination for busy nights and congested days.

SPECIFICATIONS

- Material:** Stainless steel
- Shank thread:** 1/2" or 5/8" BSP
- Mounting:** 2 x M6 screws (per pillar)
- Body options:** U and S-model



BRANDING OPTIONS



SURFACE OPTIONS



Chrome



PVD Gold



PVD Copper



Brushed



Brushed Gold



Brushed Copper



Painted



MICRO MATIC

CANADA FONT

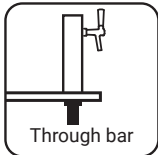
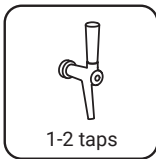
CANADA FONT AT A GLANCE

Created in homage to land of the maple tree comes our Canada range of single fonts. OK, so it's not maple. But we think oak looks better and lasts longer. Plus it's easy to customize with your logo, colored core illumination or other designs.

Your bar, your choice.

SPECIFICATIONS

- Material:** Wood and Stainless steel
- Shank thread:** 1/2" or 5/8" BSP
- Mounting:** 1½" BSP through bar tube
- Body options:** I-model



BRANDING OPTIONS



SURFACE OPTIONS



Wood



Painted



MICRO MATIC

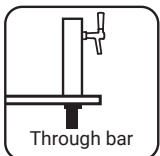
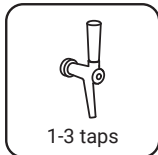
HYDRA FONT

HYDRA FONT AT A GLANCE

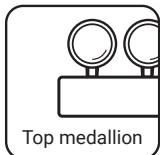
The many-headed monster. Far from being the stuff of ancient legend, this chic design will be a real-life talking point - especially if you choose a double or triple lens "head". Available in Chrome, Gold or custom-painted color finishes.

SPECIFICATIONS

- Material:** Brass
Shank thread: 1/2" BSP
Mounting: 1 1/4" BSP
through bar tube
Body options: I-model



BRANDING OPTIONS



SURFACE OPTIONS



Chrome



PVD Gold



Painted



MICRO MATIC

IMAGE FONT

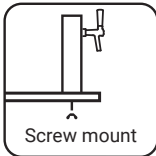
IMAGE FONT AT A GLANCE

Get a new slant on bar life with our distinctive and modern Image font range.

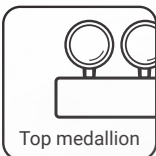
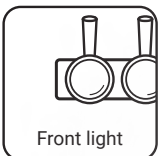
For a fully personalised look, choose your own lens or medallion design. Creates a particularly impressive effect in gravity-defying versions with two or more taps.

SPECIFICATIONS

Material:	Stainless steel
Shank thread:	1/2" or 5/8" BSP
Mounting:	4 x M8 screws (per pillar)
Body options:	U, T and L-model



BRANDING OPTIONS



SURFACE OPTIONS



Chrome



PVD Gold



PVD Copper



Brushed



Brushed Gold



Brushed Copper



Painted

MICRO MATIC

SKAGEN FONT

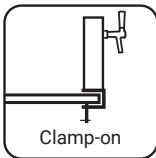
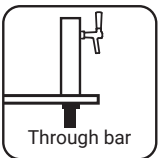
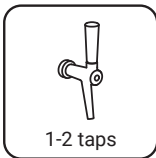
SKAGEN FONT AT A GLANCE

Clean and sleek, this classic Scandinavian design is named after Denmark's most northerly town, from where you can almost jump across to Sweden.

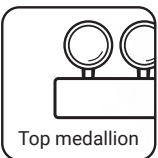
Available in polished or brushed finishes. Or for a really personal touch, why not specify your own custom color?

SPECIFICATIONS

- Material:** Stainless steel
Shank thread: 1/2" or 5/8" BSP
Mounting: 1½" BSP through bar tube or clamp on bar
Body options: I-model



BRANDING OPTIONS



SURFACE OPTIONS



Chrome



PVD Gold



PVD Copper



Brushed



Brushed Gold



Brushed Copper



Painted

MICRO MATIC

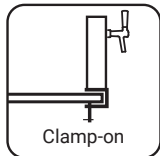
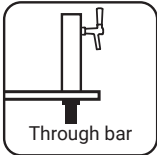
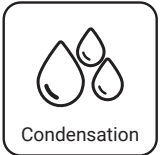
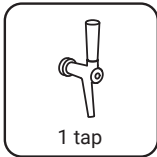
VENICE FONT

VENICE FONT AT A GLANCE

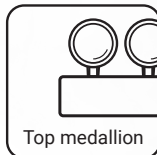
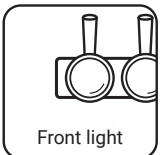
Striking vertical or round lenses give our Venice fonts added impact and offer new branding possibilities. The contemporary condensation look echos the waterways of its famous namesake while creating the perfect vibe for trendy bars.

SPECIFICATIONS

- Material:** Stainless steel
Shank thread: 1/2" or 5/8" BSP
Mounting: 1 1/2" BSP through bar tube or clamp on bar
Body options: I-model



BRANDING OPTIONS



SURFACE OPTIONS



Chrome



PVD Gold



PVD Copper



Brushed



Brushed Gold



Brushed Copper



MICRO MATIC

DRIP TRAYS

A Micro Matic Drip Tray is not only designed to ensure a clean liquid free area for the pouring operation. Its overall design is made to complement the total font presentation and enhance the whole branding area.

A range of standard designs are available and for special designs we would be happy to discuss your requirements.



SPECIFICATIONS

Item No.	Description	Finish	Dimensions Depth x Width
804779KS	-	Plastic	225 mm x 514 mm
52342	-	S/S	170 mm x 400 mm
55800	-	S/S	170 mm x 200 mm
52777	-	S/S	330 mm x 560 mm
55503	Drip tray, single rinser	S/S	170 mm x 170 mm
1700630	Rinser, assembly	Brass/Plastic	-

FONTS

BESPOKE FONTS

For the **ultimate personalised look**, you can choose to work with us on the design of your very own font concept.

From the first sketches through to the finished product, we can **produce individual bespoke fonts to any design** - even in small numbers.





BESPOKE FONTS

BUDWEISER SIGNATURE FONT



BESPOKE FONTS

CARLING FONT



BESPOKE FONTS

CARLSBERG SUPER HERO FONT



BESPOKE FONTS

BUD LIGHT FONT



ASAHI FONT



BESPOKE FONTS

SUPER BOCK FONT



TAPS - STATE OF THE ART POURING TECHNOLOGY

Choose between a variety of high quality taps that **ensures the perfect pour every time**



NEW
COPPER SURFACE

TAPS

C-TAP

INSIGHT

- The C-Tap is available with or without flow-control and has a creaming action to ensure every glass of beer can be served with a perfect head.
- The flow control adjust knob has been specifically designed for ease of use so the perfect dispense flow rate can be achieved.
- In addition to the tap being available in polished stainless steel or gold plated finish, the tap can be further personalised by fitting a branded handle with or without a spring loaded handle function.
- Stylish design adds to the technical qualities of this versatile tap.



SPECIFICATIONS

Material: Stainless steel
Shank thread: 1/2" or 5/8" BSP
Thread for handle: 3/8" UNC

Optional compensator
Optional spring loaded handle



Chrome



PVD Gold



PVD Copper

TAPS

N-TAP

FEATURES AND BENEFITS

- In addition to the tap being available in chrome or gold plated finish, the tap can be further personalised by a branded handle
- Stylish design adds to the technical qualities of this versatile tap.



SPECIFICATIONS

Material: Brass
Shank thread: 1/2" or 5/8" BSP
Thread for handle: 3/8" UNC



Chrome



PVD Gold

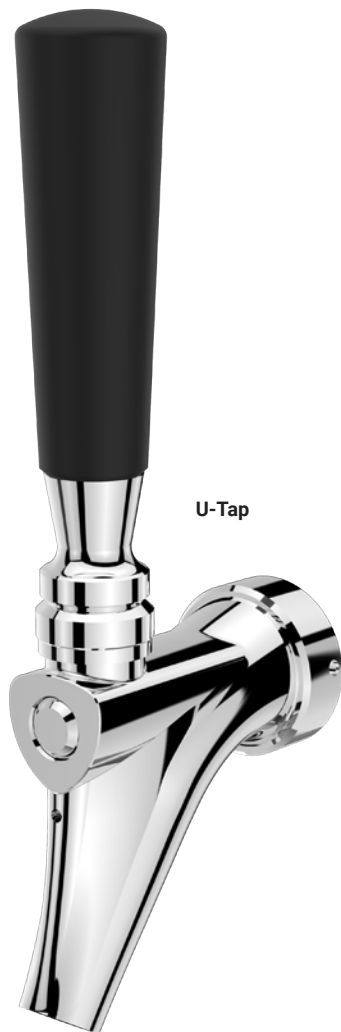
With compensator

TAPS

U-TAP & T-TAP

FEATURES AND BENEFITS

- Stainless steel lever is more durable than brass when used with tall, heavy handles.
- Highly polished exterior surface for a brilliant chrome-like finish.



SPECIFICATIONS

U-TAP

Material: Stainless steel
Shank thread: 1/2" or 5/8" BSP
Thread for handle: 3/8" UNC



Chrome

Optional compensator shank

T-TAP

Material: Stainless steel
Shank thread: 1/2" or 5/8" BSP
Thread for handle: 3/8" UNC



Chrome

Optional compensator shank

The **Micro Matic handles** come in a variety of shapes and sizes with room for **visible and eye-catching branding**



HANDLES

2- & 4-SIDED



FEATURES

- Premium branded handle design
- Easy to change branding
- Identify new products fast
- A lasting investment

SPECIFICATIONS

2-SIDED

Material: Aluminum

Tap thread: 3/8"

Branding: Printed panels



Chrome



PVD Gold



PVD Copper

4-SIDED

Material: Aluminum

Tap thread: 3/8"

Branding: Printed panels



Chrome



PVD Gold



PVD Copper

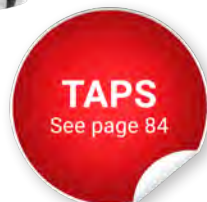
HANDLES

PEBBLE & TWIST



FEATURES AND BENEFITS

- Front branding area
- Durable metal construction
- Smooth surface, easy to clean
- Identify new products fast
- Change labels easily
- A lasting investment
- Unlimited colors



SPECIFICATIONS

PEBBLE

Material: Aluminum / plastic

Tap thread: 3/8" or M10

Branding: Printed sheet



Chrome

TWIST

Material: Aluminum / plastic

Tap thread: 3/8" or M10

Branding: Printed sheet



Chrome

HANDLES

ANGULAR



Front



Back



TAPS
See page 84

FEATURES

- Front branding area
- Durable metal construction
- Smooth surface, easy to clean
- Identify new products fast
- Change labels easily
- A lasting investment

SPECIFICATIONS

Material: Aluminum

Tap thread: 3/8"

Branding: Printed panels

With a small panel for bar side



Chrome



PVD Gold



PVD Copper

HANDLES

PANORAMA

INSIGHT

Flexible, cost-effective and uniquely designed, the Panorama tap handle delivers branding and real-time marketing. You can re-use the Panorama tap handle to promote a seasonal or traditional beer or promote special venues or holidays. With its 360° label the Panorama tap handle delivers more space for branding and image building.

SPECIFICATIONS

Material: Aluminum / Plastic

Tap thread: 3/8" or M10

Branding: Printed sheet



Satin Chrome



ROUNDED

FEATURES AND BENEFITS

- Clean design blends with faucet for a distinctive look
- Durable metal construction
- Smooth surface, easy to clean
- A lasting investment

SPECIFICATIONS

Material: Aluminum

Tap thread: 3/8"

Branding: None



Chrome



Brushed



HANDLES

BESPOKE HANDLES

For the supreme personalized look, you can work with Micro Matic to have **your very own handle design**.

From your initial design idea to the finished product, we can produce individual solutions to any design and material.

All our handles are designed for **hard continuous use** over as many years as you keep using them.

So the next time you want to add the little extra to your brand presentation, **talk to us about designing the perfect handle solution**.



POINT OF SALE

INCREASE SALES WITH POS BRAND MANAGEMENT



Create stunning effects and targeted communication to individual outlets with our new networked digital lenses.

Digital lenses not only let you bring enticing movement to the font's lens, it also allows you to change your branding, or post tactical messages in real time.

Content can be managed remotely at the touch of a button - anywhere and for all sites. Hot news story or ad break during the match? Post a special offer!

DIGITAL BRANDING BENEFITS

- New branding opportunity at the point of sales
- Easy change and editing of content (wireless connected portal)
- Easy adaptable for many installation types
- Split screen video effects
- Secured owners profile



DIGITAL BRANDING FEATURES



DIGITAL LENS LCD SCREEN

Display fresh and alluring video content on the screen - either single screen content or video content that goes across multiple screens.



WIFI CONNECTED

Change the content of your lenses remotely. Create campaigns on the fly and save cost for lens replacements.



TARGETED CONTENT

Our online portal enables you to group customer venues, allowing you to send tailored content to one, or all within a group, instantaneously.



POINT OF SALE

DIGITAL LENSES

Why not fill the font's static lens with fresh and alluring movement? With the new digital lenses you can now create a unique branding exposure with the use of LCD technology both for new and existing fonts.

The Digital lenses are available **on a selection of the Micro Matic fonts** or can be **retrofitted on existing fonts**.

The digital lens comes as standard with both brackets for top and front mounting.



DIGITAL LENS - TOP MOUNTED



DIGITAL LENS - FRONT MOUNTED

SPECIFICATIONS

Item No.	Description
820-001G	Digital lens for wifi connection with standard bracket for top mounting
820-002G	Digital lens for wifi connection with standard bracket for front mounting

POINT OF SALE

BRANDED LENSES

All of the lenses can be illuminated for **maximum brand exposure and customer attraction**.

The Micro Matic lenses fits into standard medallion holders and can thus be used for for both new installations and retrofit of existing fonts.

HYPERION LENS

The **Hyperion** is designed to incorporate front branding and complimentary side branding.



EUROPA LENS

The design of the **Europa** incorporates a 20mm thick frog eye and 10mm thick base lens to create a premium multi-layered branding lens.



CALISTO LENS

Calisto increases the brand standout with an illuminated halo around the lens.



FROG EYE LENS

The **Frog Eye** lens is 20mm thick and draws attention to "what's on tap" with the warm glow of illuminated brand identification lens.



FlexiDraft™

FLEXIDRAFT™ AIRBAR

TAKE YOUR DRAFT
WHERE THE ACTION IS



NEW
AirBar

BECAUSE BETTER BEER SELLS BETTER

Increasing the quality of the beer you serve will help you maximize the potential of your business. Experience speaks for itself. Good draft beer sells better.

We all know what a bad beer tastes like. And we'll never hurry back to the same place to get another one. Great beer, on the other hand, turns your customers into walking adverts for your business. Increasing your revenues and winning you new customers, every day.

The One-Way Beer Line completely changes the draft business. It keeps the beer fresh and eliminates the hidden costs of conventional systems related to cleaning and maintenance. It is easy to change and ensures a perfect beer every time. **And most importantly, it makes draft beer more profitable for breweries and outlets.**

FlexiDraft™

NON ALCOHOL

THE GAME-CHANGING DRAFT BEER SYSTEM

In the past, serving alcohol-free beer on draft was almost impossible. The absence of alcohol meant there was nothing to prevent bacteria from growing and contaminating the beer line.

FlexiDraft™ changes all that. Thanks to the One-Way Beer Line, even alcohol-free beer stays fresh and pure, right to the bottom of the keg. Cheers!





0.0%
ALCOHOL

0.0%
PROBLEMS

STAR - FREESTANDING AND MOBILE SOLUTIONS

FlexiDraft™ STAR is an integrated solution that combines all the benefits of a full branded FlexiDraft™ font with flexible cooling options in different sizes, allowing up to four taps on each unit.

On top of this you also get the **unique disposable One-Way Beer line** that keeps the beer fresh and eliminates the hidden costs of conventional systems related to cleaning and maintenance.

FlexiDraft™ STAR comes with professional, durable fridges for more accurate and eco-friendly cooling.

The STAR is easy to install (Plug & Play) and our selection of different fridge sizes is suitable for a wide range of common keg combinations.

FACTS

- Great branding possibilities
- Compatible with all standard kegs
- Fits all common connections
- Designed for up to 40-60 hectolitres per year per tap
- Consistent beer quality for up to 30 days
- Fixed pressure, fixed temperature
- Improved energy consumption
- Eco-friendly



SPECIFICATIONS

Product	Fonts available	Measurements (with wheels)	Kegs
STAR 10	1	W 640 x D 617 x H 978 mm	2 x 20 l (Ø235) / 1 x 30 l
STAR 15	1-2	W 650 x D 680 x H 1083 mm	4 x 20 l (Ø235) / 1 x 30 l / 1 x 50 l
STAR 20	1-2	W 950 x D 640 x H 987 mm	4 x 20 l (Ø235) / 2 x 20 l / 1 x 30 l / 1 x 50 l
STAR 25	1-2	W 736 x D 778 x H 1102 mm	4 x 20 l (Ø235) / 1 x 30 l DIN/ 2 x 30 l Euro (stacked) / 1 x 50 l
STAR 30	1-3	W 1230 x D 640 x H 987 mm	6 x 20 l (Ø235) / 2 x 30 l / 2 x 50 l
STAR 40	2-4	W 1520 x D 700 x H 1070 mm	2 x 4 x 20 l (Ø235) / 2 x 2 x 30 l Euro (stacked) / 2 x 1 x 30 l DIN/ 2 x 1 x 50 l

FlexiDraft™ STAR

EASY BRANDING

In a few minutes
create and change
**YOUR
BRANDING**

To complete your FlexiDraft™, we offer an **easy branding concept**, which allows you to **create and change engaging marketing messages** in few minutes.



Interchangeable
tube branding

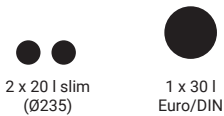
Interchangeable
magnetic foil

STAR FRIDGES

STAR 10

- Bottom mounted cooling unit
- Dimensions W 640 x D 617 x H 978 mm
- For 1 font
- Including integrated drip tray
- Including wheels

Keg combinations (examples):



ADD-ONS

- Door lock
- Interior light
- Movable shelf



STAR 15

- Top mounted cooling unit
- Dimensions W 650 x D 680 x H 1083 mm
- For 1-2 fonts
- Including wheels

Keg combinations (examples):



ADD-ONS

- Door lock
- Interior light



STAR 20

- Side mounted cooling unit (cassette)
- Dimensions W 950 x D 640 x H 987 mm
- For 1-2 fonts
- Including integrated drip tray
- Including wheels

Keg combinations (examples):



ADD-ONS

- Slider function
- Door lock
- Interior light



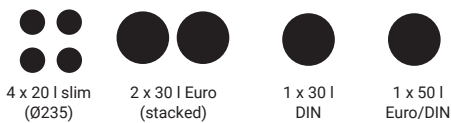
FlexiDraft™

STAR FRIDGES

STAR 25

- Top mounted cooling unit
- Dimensions W 736 x D 778 x H 1102 mm
- For 1-2 fonts
- Including integrated drip tray
- Including slider
- Including wheels

Keg combinations (examples):



STAR 30

- Side mounted cooling unit (cassette)
- Dimensions W 1230 x D 640 x H 987 mm
- For 1-3 fonts
- Including integrated drip tray
- Including wheels

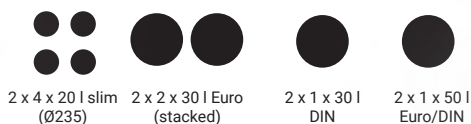
Keg combinations (examples):



STAR 40

- Center mounted cooling unit (cassette)
- Dimensions W 1520 x D 700 x H 1070 mm
- For 2-4 fonts
- Including integrated drip tray
- Including wheels

Keg combinations - 2 chambers (examples):



Optional CO₂ bottle holder kit for your STAR 25
item no. 763-961

ADD-ONS

- Door lock
- Interior light

ADD-ONS

- Slider function
- Door lock
- Interior light

ADD-ONS

- Slider function
- Door lock
- Interior light

FlexiDraft™ UNDERCOUNTER

UNDERCOUNTER - COOLERS TO BE FITTED INTO BARS

FlexiDraft™ UNDERCOUNTER is a series of **high-quality** undercounter coolers developed for FlexiDraft™.

We offer a **wide range of different coolers for existing bar set-ups**. Our selection of different cooler sizes is suitable for all common kegs and comes with adjustable legs for perfect fit.

The FlexiDraft™ UNDERCOUNTER series comes with professional, durable coolers for more accurate cooling and is designed for a sleek and modern look. **The series is eco-friendly, energy saving and efficient.**

ADD-ONS

- **Slider function**
(except UC 10)
- **Door lock**
- **Interior light**





FACTS

- Compatible with all standard kegs
- Fits all common connections
- Designed for up to 40-60 hectolitres per year per tap
- **Consistent beer quality** for up to 30 days
- Fixed pressure, fixed temperature
- Improved energy consumption
- Eco-friendly

SPECIFICATIONS

Product	Measurements (with adjustable legs)	Kegs
UNDERCOUNTER 10	W 600 x D 600 x H 865-881 mm	2 x 20 l (Ø235) / 1 x 30 l
UNDERCOUNTER 20	W 920 x D 610 x H 870-885 mm	4 x 20 l (Ø235) / 2 x 20 l (stacked) / 1 x 30 l / 1 x 50 l
UNDERCOUNTER 30	W 1200 x D 610 x H 870-885 mm	6 x 20 l (Ø235) / 2 x 30 l / 2 x 50 l
UNDERCOUNTER 40	W 1500 x D 610 x H 870-885 mm	2 x 4 x 20 l (Ø235) / 2 x 1 x 30 l DIN / 2 x 1 x 50

UNDERCOUNTER FRIDGES

UNDERCOUNTER 10

- Bottom mounted cooling unit
- Dimensions W 600 x D 600 x H 865-881 mm
- For 1 font
- Including adjustable legs

Keg combinations (examples):



ADD-ONS

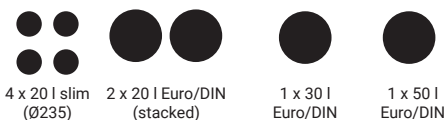
- Door lock
- Interior light
- Movable shelf



UNDERCOUNTER 20

- Side mounted cooling unit (cassette)
- Dimensions W 920 x D 610 x H 870-885 mm
- For 1-2 fonts
- Including adjustable legs

Keg combinations (examples):



ADD-ONS

- Slider function
- Door lock
- Interior light



UNDERCOUNTER FRIDGES

ADD-ONS

- **Slider function**
- **Door lock**
- **Interior light**

UNDERCOUNTER 30

- Side mounted cooling unit (cassette)
- Dimensions W 1200 x D 610 x H 870-885 mm
- For 1-3 fonts
- Including adjustable legs

Keg combinations (examples):



6 x 20 l slim (Ø235)



2 x 30 l Euro/DIN



2 x 50 l Euro/DIN



UNDERCOUNTER 40

- Center mounted cooling unit (cassette)
- Dimensions W 1500 x D 610 x H 870-885 mm
- For 2-4 fonts
- Including adjustable legs

Keg combinations - 2 chambers (examples):



2 x 4 x 20 l slim (Ø235)



2 x 1 x 30 l DIN



2 x 1 x 50 l Euro/DIN



ADD-ONS

- **Slider function**
- **Door lock**
- **Interior light**

COPENHAGEN TOWERS



Available with variety of branding accessories the Copenhagen font allows you to **create your own unique expression and to draw the attention of the customer.**

SPECIFICATIONS

Item No.	No.	Specification
763-833	①	Copenhagen Tower with illuminated round frog eye lens and tube
763-430	②	Copenhagen Tower with illuminated round frog eye lens
763-874	-	Copenhagen Tower with illuminated round frog eye lens (short 460 mm)
763-811	③	Copenhagen Tower with illuminated oval fish eye lens and tube
763-250	④	Copenhagen Tower with illuminated oval fish eye lens
776-081	⑤	Copenhagen Tower with illuminated oval front lens
763-290	⑥	Copenhagen Tower with non-illuminated round front lens
763-245	⑦	Copenhagen Tower without branding and illumination
763-872	-	Copenhagen Tower without illumination (short 460 mm)
776-260	⑧	Copenhagen Tower for Easy Branding including metal rail for mounting of wrap
776-402	⑨	Copenhagen Tower with digital lens and illuminated tube
776-401	⑩	Copenhagen Tower with digital lens





5

6

7

8



9

10



DIGITAL LENSES

Create stunning effects and targeted communication to individual outlets with our new networked digital lenses.

Digital lenses not only let you bring enticing movement to the font's lens, it also allows you to change your branding, or post tactical messages in real time.

Content can be managed remotely at the touch of a button - anywhere and for all sites. Hot news story or ad break during the match? Post a special offer!

Read more about the Digital Lenses on page 94.

COPENHAGEN DUO TOWER

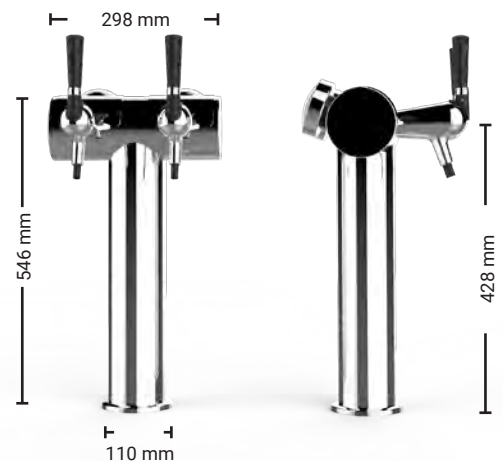


The Copenhagen Duo Tower for FlexiDraft™ is a state-of-the-art font in a modern and contemporary design. Available with 2 taps and a variety of branding accessories the Copenhagen Duo Tower for FlexiDraft™ allows you to create your own unique expression and to draw the attention of the customer.

The stainless steel finish is easily cleaned to ensure the quality appearance can be maintained.

SPECIFICATION

Item No.	No.	Specification
776-044	①	Copenhagen Duo Tower chrome with illuminated round frog eye lens
776-177	②	Copenhagen Duo Tower chrome without branding and illumination
776-314	③	Copenhagen Duo Tower gold with illuminated round frog eye lens
776-315	④	Copenhagen Duo Tower copper with illuminated round frog eye lens
776-400	⑤	Copenhagen Duo Tower chrome with digital lenses





EASY
Mounting of
One-Way Beer Line

DIGITAL LENSES

Create stunning effects and targeted communication to individual outlets with our new networked digital lenses.

Digital lenses not only let you bring enticing movement to the front's lens, it also allows you to change your branding, or post tactical messages in real time.

Content can be managed remotely at the touch of a button - anywhere and for all sites. Hot news story or ad break during the match? Post a special offer!

Read more about the Digital Lenses on page 94.



NEW

DISPENSE HEADS & ONE-WAY BEER LINES



SPECIFICATIONS

System	Item No.	No.	Description	Specification
A-System	763-160	①	Dispense Head	Stainless steel/Brass Tin/Ni plated, 3/8" JG
A-System	112-915	①	One-way beer line	Color code red, ID 4 mm (tube transparent), standard beer line, working pressure below 1.1 bar
A-System	112-921	①	One-way beer line	Color code red, ID 3 mm (tube blue), for beer with higher CO ₂ content, working pressure above 1.1 bar
G-System	763-161	②	Dispense Head	Stainless steel/Brass Tin/Ni plated, 3/8" JG
G-System	112-915	②	One-way beer line	Color code red, ID 4 mm (tube transparent), standard beer line, working pressure below 1.1 bar
G-System	112-921	②	One-way beer line	Color code red, ID 3 mm (tube blue), for beer with higher CO ₂ content, working pressure above 1.1 bar
M-System	763-264	③	Dispense Head	Stainless steel/Brass Tin/Ni plated, 3/8" JG
M-System	112-920	③	One-way beer line	Color code purple, ID 4 mm (tube transparent), standard beer line, working pressure below 1.1 bar
M-System	122-111	③	One-way beer line	Color code purple, ID 3 mm (tube blue), for beer with higher CO ₂ content, working pressure above 1.1 bar
S-System	763-162	④	Dispense Head	Stainless steel/Brass Tin/Ni plated, 3/8" JG
S-System	112-916	④	One-way beer line	Color code blue, ID 4 mm (tube transparent), standard beer line, working pressure below 1.1 bar
S-System	112-922	④	One-way beer line	Color code blue, ID 3 mm (tube blue), for beer with higher CO ₂ content, working pressure above 1.1 bar
D-System	763-163	⑤	Dispense Head	Stainless steel/Brass Tin/Ni plated, 3/8" JG
D-System	112-917	⑤	One-way beer line	Color code green, ID 4 mm (tube transparent), standard beer line, working pressure below 1.1 bar
D-System	112-923	⑤	One-way beer line	Color code green, ID 3 mm (tube blue), for beer with higher CO ₂ content, working pressure above 1.1 bar
KeyKeg-System	776-126	⑥	Dispense Head	Stainless steel/Brass Tin/Ni plated, 3/8" JG
KeyKeg-System	122-475	⑥	One-way beer line	Color code white, ID 3.2 mm (tube orange), standard beer line, working pressure 1.5 bar

FlexiDraft™ fits all standard keg interfaces and will thus allow you to create new business opportunities re-using your existing keg portfolio. The One-Way Beer Line is connected to the standard keg extractor tube via the dedicated FlexiDraft™ dispense heads.



ONE-WAY BEER LINES



ADD-ONS

STAR

Item No.	Specification
763-804	Slider function for STAR 20, (25) & 40 (2 pcs)
776-188	Slider function for STAR 30
776-316	Interior light for STAR 10, 15 & 25
776-317	Interior light for STAR 20
776-318	Interior light for STAR 30
776-319	Interior light for STAR 40
776-322	Door lock for STAR 15 & 25
776-320	Door lock for STAR 10, 20 & 30
776-326	Door lock for STAR 40



Slider

UNDERCOUNTER

Item No.	Specification
776-194	Slider function for UNDERCOUNTER 20
776-185	Slider function for UNDERCOUNTER 30
776-194	Slider function for UNDERCOUNTER 40 (2 pcs.)
776-316	Interior light for UNDERCOUNTER 10
776-317	Interior light for UNDERCOUNTER 20
776-318	Interior light for UNDERCOUNTER 30
776-319	Interior light for UNDERCOUNTER 40
776-320	Door lock for UNDERCOUNTER 10, 20 & 30
776-321	Door lock for UNDERCOUNTER 40



Interior light



Door lock

REGULATORS & DRIP TRAYS

REGULATORS

Item No.	Description	Specification
791-147	Primary 1 line 0-3/2 bar/PSI	Inlet - W 21.8 x 1/14 Outlet - 3/8" JG
792-323	Secondary 1 line 0-3/2 bar/PSI (incl. wall bracket)	Inlet - 3/8" JG (incl. plug) Outlet - 3/8" JG
791-701	Double battery 0-3/2 bar/PSI	Inlet - W 21.8 x 1/14 Outlet - 2 x 3/8" JG



791-147



792-323



791-701

DRIP TRAY WITH INTEGRATED GLASS WASHER FOR UNDERCOUNTER

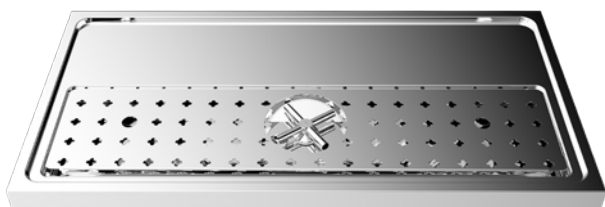
Item No.	Description	Specification
776-017	UNDERCOUNTER 10	Bar top plate with integrated drip tray/glass rinser (600 x 400 mm), without holes for fonts
776-019	UNDERCOUNTER 20	Bar top plate with integrated drip tray/glass rinser (700 x 400 mm), without holes for fonts
776-020	UNDERCOUNTER 30	Bar top plate with integrated drip tray/glass rinser (800 x 400 mm), without holes for fonts
776-021	UNDERCOUNTER 40	Bar top plate with integrated drip tray/glass rinser (1000 x 400 mm), without holes for fonts



UNDERCOUNTER 10



UNDERCOUNTER 20



UNDERCOUNTER 30



UNDERCOUNTER 40

**Valpar Micro Matic is the
world leading manufacturer of
beverage tubing and pythons**



VALPAR

BEVERAGE TUBING & PYTHONS

PYTHON

Whether it is for a small bar at an open air concert or for a major entertainment arena, Valpar Micro Matic provide customised, quality, high performance solutions tailored to you:

- Protecting taste
- Colder temperatures
- Improved hygiene
- More energy efficient
- And most importantly, within your specification



TUBING

Valpar Micro Matic are specialists in the art of monolayer and multilayer extrusion, bringing you a vast range of solutions to meet and exceed the needs of dispensing today and into the future.

Food Contact Status

All Valpar Micro Matic beverage tubing complies with EU Regulation 10/2011 for "Plastic Materials and Articles intended to come into contact with food". Our tubing materials also comply with the Code of Federal Regulations issued by the Food and Drug Administration (FDA), Title 21; in particular paragraphs CFR 177.1520 - Olefin Polymers, CFR 177.1500 (b) (5.1) - Nylon Polymers; CFR 177.1350 - EVA Copolymers.

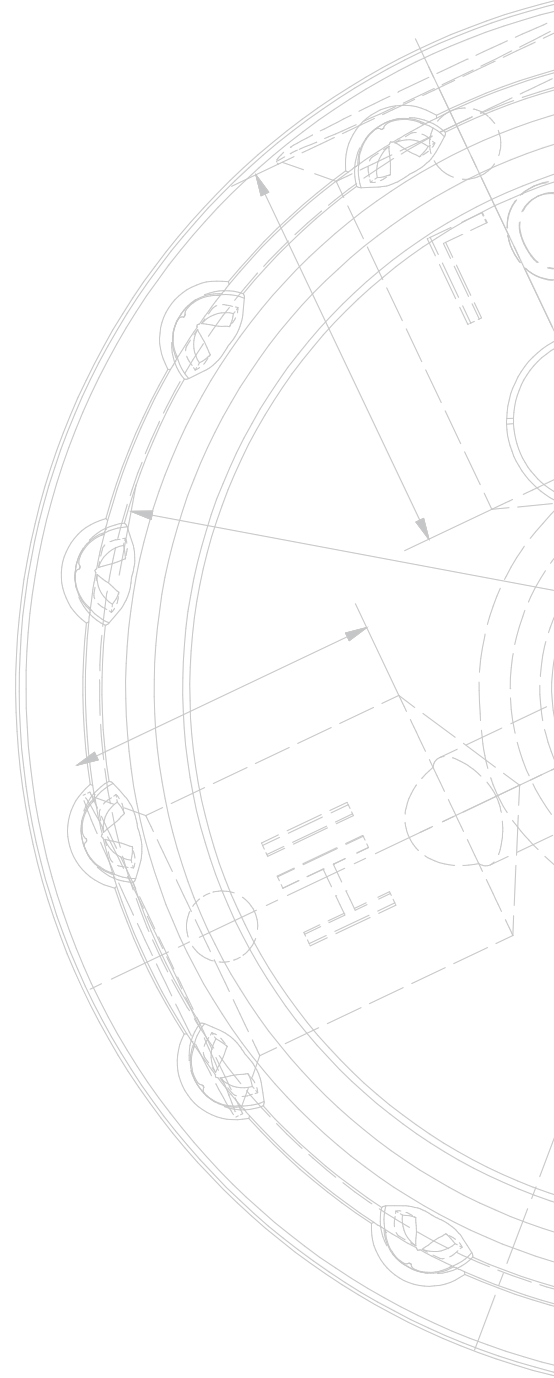
TRACE COOLING

Valpar Micro Matic Tap and Tracecooling solutions are custom-designed to ensure you deliver your promise of premium quality with every drink dispensed.

Valpar Micro Matic's unique ability to bend, shape and weld tubing, has meant that we can tailor-make Tap and Tracecoolers to suit various types of taps and fonts. This solution not only cools all the way to the tap, but also uses special technology to draw the heat away from the tap.

MANIFOLDS

This is the plug pour technology from Valpar Micro Matic that gives flat line colder temperatures and ease of installation.



VALPAR

MDP & BREWMASTER 2 (BAM)

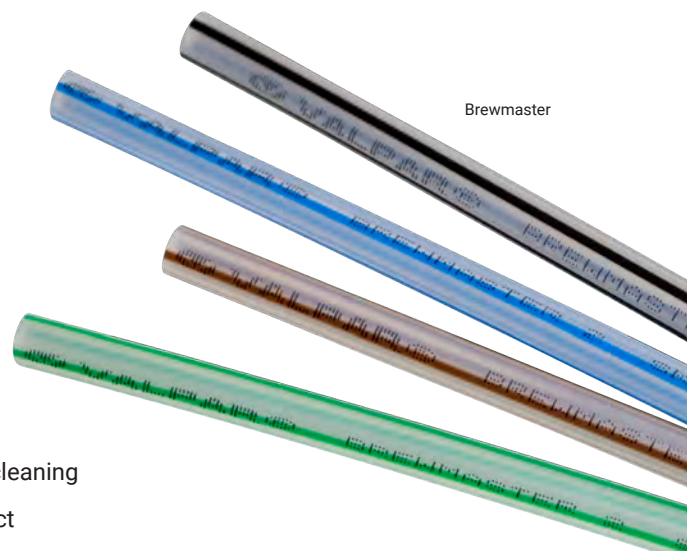
MDP

- Description:** MDP (Polyethelene)
- Application:**
- Beer
 - Soft drink
 - Carbonated water
 - Gas
- Features and Benefits:**
- Low cost solution
 - Good inner finish
 - Taint free
 - Moderate gas retention
 - Good flexibility
 - Compatible with barb and push in fittings
- Options:**
- Natural
 - Solid color (for gas)
 - Tint
 - Color striped (Codemaster)



BREWMASTER 2 (BAM)

- Description:** Brewmaster 2 (BAM)
- Application:**
- Beer
 - Soft drink
 - Carbonated water
 - Gas (can include UV resistance)
- Features and Benefits:**
- Taint free and ultra-smooth inner layer
 - Low gas permeation
 - High flexibility compared to solid nylon tubes
 - Superb adhesion between all layers
 - Reduced bacterial growth and yeast adhesion
 - Extended cleaning cycle or improved and easier cleaning
 - Maintains carbonation levels of dispensed product
 - Compatible with both barb and push-in fittings
- Options:**
- Natural
 - Solid color (for gas)
 - Color striped (for easy identification)

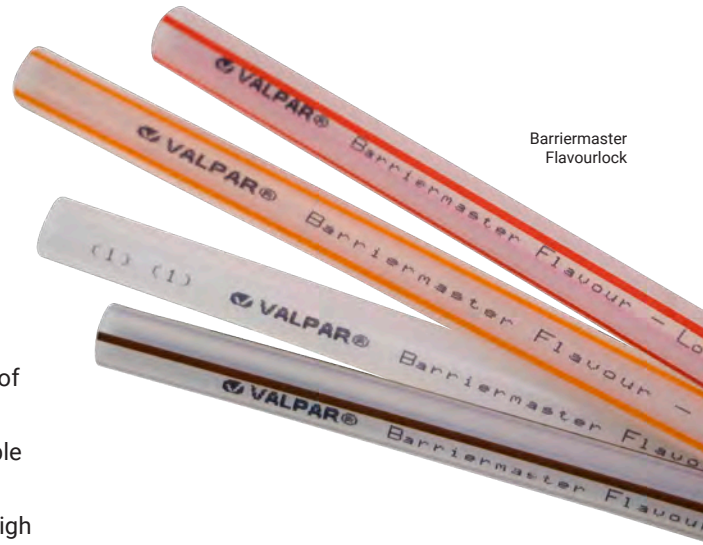


VALPAR

BARRIERMASTER FLAVOURLOCK

BARRIERMASTER FLAVOURLOCK

- Description:** Barriermaster Flavourlock
- Application:**
- Beer
 - Soft drink
 - Carbonated water
- Features and Benefits:**
- Very smooth co-polymer inner layer
 - High-performance gas and flavour barrier layer
 - Flexible
 - Inhibits gas loss from the beverage and oxygen ingress to the beverage
 - Offers protection against cross migration of strong flavours into adjacent lines
 - Highly engineered for consistent, repeatable quality
 - Superb adhesion between all layers with high resistance to delamination
 - New barrier layer ensures no loss of CO₂ from beverage and practically eliminates any O₂ ingress into the beverage tube that could promote bacteria growth, ensuring quality of beer is protected
 - Offers protection against cross migration of products and ideal for full immersion in glycol systems
 - Extended cleaning cycles or improved and easier cleaning, saving money and safeguarding beer quality – fresher, cleaner, longer!
 - Taste protected by practically full retention of the dispense gas throughout the tube length coupled with hygienic properties
 - Compatible with Barb and Push-In Fittings
- Options:**
- Natural
 - Color striped (for easy identification)



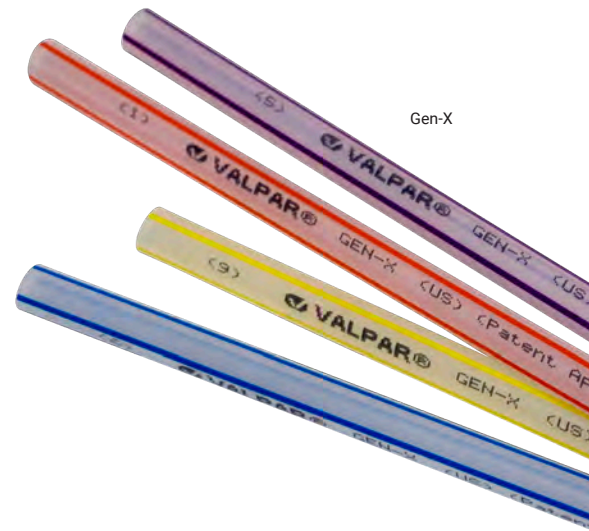
Barriermaster
Flavourlock

VALPAR

GEN-X

GEN-X

- Description:** Gen-X (High performance tube)
- Application:**
- Beer, soft drink, carbonated water and gas
- Features and Benefits:**
- Ultra-smooth tried and tested nylon inner layer
 - High performance gas and flavour barrier layer
 - Highly engineered for consistent, repeatable quality
 - Superb adhesion between all layers with high resistance to delamination
 - New barrier layer ensures no loss of CO₂ from beverage and practically eliminates any O₂ ingress into the beverage tube that could promote bacteria growth-ensuring quality of beer is protected
 - Offers protection against cross migration of products and ideal for full immersion in glycol systems
 - Extended cleaning cycles or improved and easier cleaning- saving money and safeguarding beer quality- fresher, cleaner, longer!
 - Taste protected by practically full retention of the dispense gas throughout the tube length coupled with hygienic properties
 - Suitable for tight bend radius applications
 - Compatible with barb and push-in fittings
- Options:**
- Natural and color striped (for easy identification)



FNT

FNT

- Description:** Non tainting flexible tubing
- Application:**
- Soft drinks syrup lines from Bag-in-Box
 - Cask ale lines
- Features and Benefits:**
- Flexibility
 - Clear
 - Good kink resistance
 - Non-tainting
 - BPA and phthalate free
 - Barb and clip fittings



VALPAR

SUPERFLEXMASTER

SUPERFLEXMASTER

- Description:** SuperFlexmaster
- Application:**
- Beer
 - Soft drink
 - Carbonated water
 - Gas
- Features and Benefits:**
- Flexibility
 - Good kink resistance
 - Ultra smooth inner layer
 - Taint free
 - Easy to install
 - Ideal where tight bend radii are needed
 - Extended cleaning cycles in comparison to EVA, MDP and PVC (Vinyl)
 - Does not impart an off-taste to the beverage
- Options:**
- Natural



SuperFlexmaster

XTRAFLEXMASTER

XTRAFLEXMASTER

- Description:** Xtraflexmaster
- Application:**
- Beer
 - Soft drinks
 - Carbonated water
 - Gas
- Features and Benefits:**
- Even more flexible than Superflexmaster
 - Good kink resistance
 - Ultra smooth inner layer
 - Taint free
 - Easy to install
 - Ideal where tight bend radii are needed
 - Extended cleaning cycles in comparison to EVA, MDP and PVC (Vinyl)
 - Does not impart off-taste to the beverage.



Xtraflexmaster

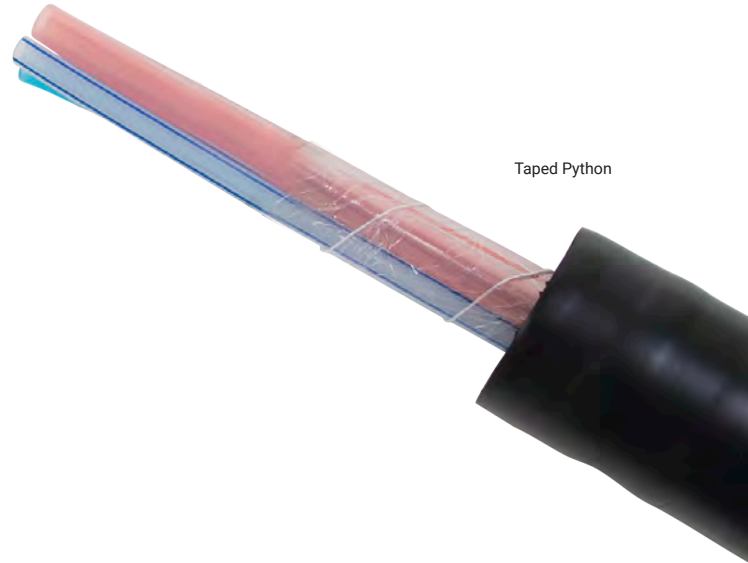
VALPAR

PYTHONS



TAPED PYTHON

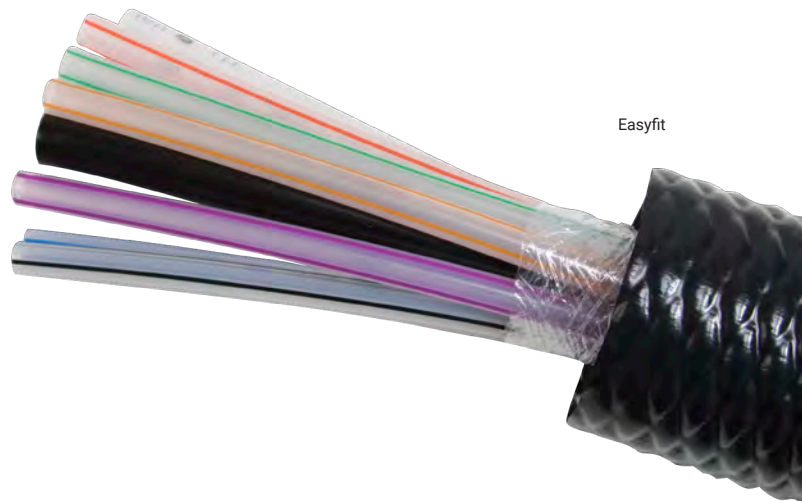
Taped python is used by breweries and soft drinks companies throughout the world and has been the industry norm for many years.



Taped Python

EASYFIT

Easyfit is a python with superior reinforced jacket, also known as 'Black Diamond' in the USA, because of its innovative diamond shape. It is used by customers who have high python usage. Easyfit outperforms all other pythons on the market in terms of its low friction reinforced tough outer jacket, tear resistance and increased effectiveness. 'Life just got easier' for installers with **ease of installation**, less catching when pulled through ducts and a tighter bend radius. Every customer who uses this product continues to be impressed with the difference.



Easyfit

COLORED PYTHON

To enhance branding, pythons with **specific colored finish** can also be supplied, but are subject to minimum manufacturing quantities.



Colored python

VALPAR

PYTHONS



FOIL WRAPPED

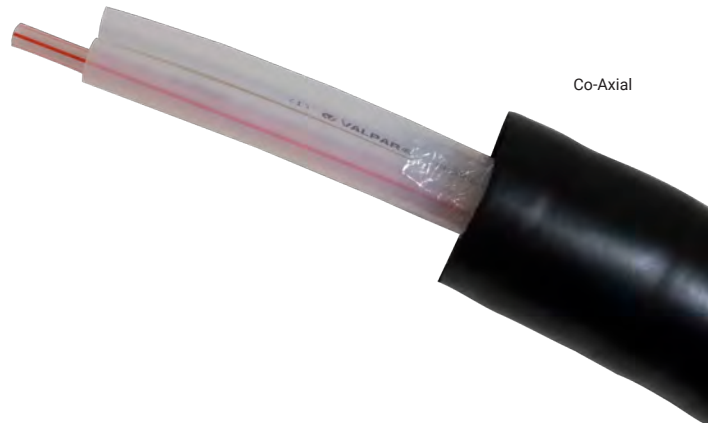
For customers who want **colder drinks** Foil Wrapped python will be what you are looking for. A metallised wrap to the tubing bundle reflects some of the heat absorbed by the python, resulting in more uniform dispense and colder temperatures in the glass.



Foil Wrapped

CO-AXIAL

Co-axial (tube in tube) python is another option for **super cold dispense**. It is used with specifically designed John Guest fittings and gives practically 100% contact between the coolant and product line. It offers the potential of reducing the need for secondary cooling and provides a consistent low temperature dispense, resulting in improved hygiene with increased time between cleans.



Co-Axial

CABLED PYTHON

In response for a more flexible python and bundle, Valpar Micro Matic also offers the option of **cabled python**. The lines are twisted to give the product a **greater degree of flexibility**, making it easier to install in ducting and on tight radius bends. Cabled pythons can be taped or jacketed in EasyFit.



Cabled Python

VALPAR

PYTHONS

FIRE RETARDANT PYTHON

Valpar Micro Matic can now offer pythons with **fire retardant** materials, suitable for installation on ships and in public buildings (train stations, airports etc). Python lines are nylon lined with a Low Smoke, Zero Halogen outer layer, eg Brewmaster FR, Gen-X FR, Barriermaster Flavourlock FR. The bundle is wrapped in aluminium foil and fibreglass tape to meet stringent fire performance standards that limit the release of smoke, toxic fumes and the spread of flame. Currently meets ASTM E84 with a Class A rating.

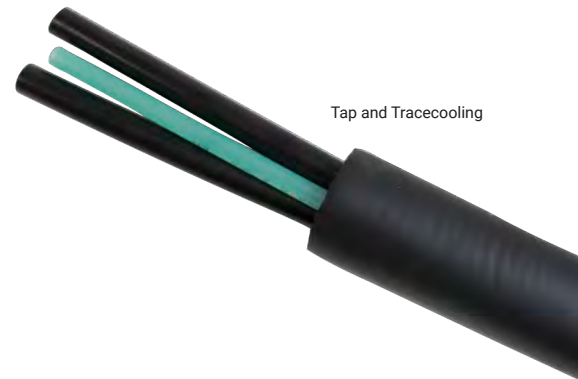
Approved Fire Collars can also be supplied for all pythons.



Fire Retardant Python

TAP AND TRACECOOLING

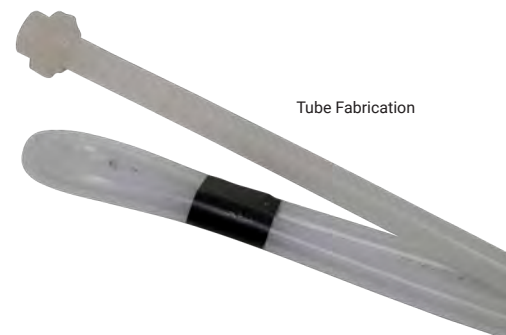
Valpar Micro Matic **Tap and Tracecooling** solutions are custom-designed to ensure you deliver your promise of premium quality and more consistent temperature. This solution cools all the way to the tap, but also uses special technology to draw the heat away from the tap.



Tap and Tracecooling

TUBE FABRICATION

Valpar Micro Matic has a unique ability to bend, shape and weld tubing and this has allowed us to tailor make Tap and Tracecoolers to suit various types of taps and fonts.



Tube Fabrication

VALPAR

ACCESSORIES

COATED INSULATION

For the protection of pipes and assemblies that can only be insulated on site.

Valpar Micro Matic now supplies **elastomeric insulation with a tough, flexible outer polymer coating** that is water resistant and protects against physical damage. The coating is flexible enough to be peeled back to facilitate connections and then re-applied.



Coated Insulation

INSULATING HARD FOAM PARTS

For **areas which are difficult to insulate** using conventional methods, parts are moulded in hard polyurethane foam and can be protected by plastic moulded covers.



Hard Foam

ACCESSORIES

PYTHON CLAMPS

Python clamps - use python clamps **during installation** of python to avoid crushing and keep python neat against various surfaces.

Clamps



TAPE

PVC Tape – Valpar Micro Matic supplies a **variety of tape sizes** for topping and tailing or repair when required.

Tape



INSULATION

Insulation – Valpar Micro Matic can supply various sizes of insulation in 2m lengths to **enhance your system** from cold room to point of dispense.

Insulation



INSULATING TAPE

3mm Insulating Tape – with an adhesive back, the tape is ideal for insulating tubing quickly and effectively.

Insulation tape



CUTTERS

Cutters – Valpar Micro Matic can supply **tube** cutters, **python** cutters and **coaxial** cutters specially designed for use in various applications.

Cutters



TRUNKING

Trunking – we can supply plastic trunking to **conceal python** in areas which need to be kept tidy. It can easily be cut to the required length for each installation.

Trunking



Easy cleaning, durable and hygienic are the common features for all products in our cleaning selection



CLEANING

CLEANING BOTTLES

SACK - SMALL ACCOUNT CLEANING KIT

High density polyethylene bottles supplied with bottle cap and gas pump. Bottle caps and gas pumps are made from acetal (POM). Easy to use the system with a flow rate of up to 7 litres/min.

Item No.	Description	Litre
803572KS	S - Type	30 L
803694KS	S - Type	15 L
804089KS	G - Type	30 L
804472KS	G - Type	15 L
803873KS	A - Type	30 L
804052KS	A - Type	15 L
804659KS	U - Type	30 L
804660KS	U - Type	15 L



803572KS



804472KS

HDPE BOTTLES WITH ACETAL CAP

High Density Polyethylene Bottles contain a bottle cap complete with dip tube and pressure relieving valve. The bottles are also available in 30 and 50 litres.

Bottle caps are made from Acetal (POM) and are fitted with a pressure relieving valve. Bottles are designed for a maximum working pressure of 4 bar (60psig).

Item No.	Description	Litre
806108KS	Type A	5 L - standard version
806109KS	Type G	5 L - standard version
806117KS	Type M	5 L - standard version
806101KS	Type S	5 L - standard version
806103KS	Type U	5 L - standard version
806238KS	Type A	15 L - standard version
806239KS	Type G	15 L - standard version
806247KS	Type M	15 L - standard version
806231KS	Type S	15 L - standard version
806233KS	Type U	15 L - standard version
806148KS	Type A	15 L - slim version
806149KS	Type G	15 L - slim version
806157KS	Type M	15 L - slim version
806141KS	Type S	15 L - slim version
806143KS	Type U	15 L - slim version



806149KS



806231KS

CLEANING

CLEANING BOTTLES

HDPE BOTTLES WITH STAINLES STEEL CAP

This version of the High Density Polyethylene Bottles from Micro Matic includes a stainless steel bottle cap and stainless steel spear. The bottle caps are fitted with a pressure relieving valve.

Bottles are designed for a maximum working pressure of 4 bar (60psig).

Item No.	Description	Litre
806518KS	Type A	5 L - standard version
806519KS	Type G	5 L - standard version
806517KS	Type M	5 L - standard version
806511KS	Type S	5 L - standard version
806513KS	Type U	5 L - standard version
806514KS	Type D	5 L - standard version
806358KS	Type A	15 L - standard version
806359KS	Type G	15 L - standard version
806357KS	Type M	15 L - standard version
806351KS	Type S	15 L - standard version
806353KS	Type U	15 L - standard version
806354KS	Type D	15 L - standard version
806468KS	Type A	15 L - slim version
806469KS	Type G	15 L - slim version
806467KS	Type M	15 L - slim version
806461KS	Type S	15 L - slim version
806463KS	Type U	15 L - slim version
806464KS	Type D	15 L - slim version



CLEANING BOTTLES STAINLESS STEEL

Stainless steel cleaning bottles exclusive of extractor tubes.

The bottles must not be used with products that contain chlorine and/or other products that are not suitable to be in contact with this type of stainless steel.

Item No.	Description	Litre
221-003	One neck 14 TPI	9 L
221-005	Two necks 14 TPI	9 L
221-004	Three necks 14 TPI	9 L
221-006	Four necks 14 TPI	9 L
221-007	Five necks 14 TPI	9 L
221-008	One neck 14 TPI	18 L
221-001	Two neck 14 TPI	18 L
221-009	Three neck 14 TPI	18 L
221-002	Four necks 14 TPI	18 L
221-010	Five necks 14 TPI	18 L



CLEANING

CLEANING ADAPTORS

A-SYSTEM

Item No.	Description	Fittings inclusive
2A1-078	Valve system	2 x 3/8" enots, brass (tin/nickel plated)
2A1-076	Valve system	2 x 7 mm ID x 8.3 mm OD, brass (tin/nickel plated)
2A1-009	Double	with chain
2A1-014	Valve system	1 x 10 mm ID x 11.5 mm OD, brass (tin/nickel plated)



2A1-076



2A1-009

G-SYSTEM

Item No.	Description	Fittings inclusive
2G3-077	Valve system	2 x 3/8" enots, brass (tin/nickel plated)
2G3-002	Valve system	1 x 7 mm tail pipe ID, brass (tin/nickel plated)
2G3-004	Valve system	2 x 3/8" JG, brass (tin/nickel plated)
2G3-048	Valve system	1 x 3/8" JG and SOV, brass (tin/nickel plated)



3G3-004



3G3-048

M-SYSTEM

Item No.	Description	Fittings inclusive
2M1-010	Valve system	1 x 10 mm ID x 11.5 mm OD, brass (tin/nickel plated)
2M1-020	Valve system	1 x 3/8" JG, brass (tin/nickel plated)
2M1-012	Valve system	2 x 10 mm ID, brass (tin/nickel plated)
2M1-015	Valve system	1 x 7 mm ID, brass (tin/nickel plated)



2M1-020



2M1-012

S-SYSTEM

Item No.	Description	Fittings inclusive
2S2-019	Valve system	2 x 3/8" JG, brass (tin/nickel plated)
2S2-004	Blind	without fittings
2S2-007	Double	with chain
2S2-041	Valve system	1 x 3/8" JG, brass (tin/nickel plated)
2S2-099	Valve system	2 x 3/8" enots, brass (tin/nickel plated)



2S2-007



2S2-041

D-SYSTEM

Item No.	Description	Fittings inclusive
2D2-008	Valve system	2 x 10 mm ID x 11.5 mm OD, brass (tin/nickel plated)
2D2-007	Valve system	1 x 10 mm tail pipe ID, brass (tin/nickel plated)
2D2-011	Valve system	2 x 1/2" JG, brass (tin/nickel plated)



2D2-007



2D2-011

Micro Matic offers a large selection of various connections. The shown models are just a small selection - for special requirements ask your sales contact.

CLEANING

CLEANING ADAPTORS

U-SYSTEM

Item No.	Description	Fittings inclusive
2U2-003	Valve system	2 x JG, brass (tin/nickel plated)
2U2-000	Valve system	without fittings
2U2-014	Valve system	1 x 10 mm tail pipe, brass (tin/nickel plated)
2U2-007	Single	1 x 10 mm enots and SOV, brass (tin/nickel plated)



2U2-014



2U2-007

L-SYSTEM

Item No.	Description	Fittings inclusive
2L1-022	Valve system	1 x 7 mm ID x 8.3 mm OD - standard, brass (tin/nickel plated)
2L1-016	Valve system	1 x 10 mm tail pipe ID, brass (tin/nickel plated)
2L1-021	Valve system	2 x 7 mm tail pipe ID, brass (tin/nickel plated)



2L1-016



2L1-021

KEYKEG-SYSTEM

Item No.	Description	Fittings inclusive
2G3-005	KeyKeg	2 x 3/8" John Guest
2G3-006	KeyKeg	2 x 1/2" John Guest
2G3-007	KeyKeg	2 x tail pipe OD 8.3 x ID 5.5



2G3-005



2L1-021

ADAPTORS ACETAL

Item No.	System	Description	Fittings inclusive
802769KS	A-system	Combined ring main	3/8" JG
802595KS	G-system	Combined ring main	3/8" JG
802483KS	S-system	Combined ring main	3/8" JG
802770KS	U-system	Combined ring main	3/8" JG



802769KS



802483KS

CLEANING

SPEARS

SPEARS FOR CLEANING BOTTLES

Stainless steel spears for cleaning bottles. The spears are made of stainless steel with a tube of plastic. Please see the illustration. Please specify size of cleaning bottle when ordering.

Item No.	System	Remarks
201-201	A	-
201-202	G	-
201-207	M	-
201-203	S	2 lugs
201-204	S	3 lugs
201-206	U	-
201-205	D	-
201-208	L	Standard
201-218	L	Pepsi
201-432	KEYKEG	-



ACCESSORIES

SPONGE BALLS FOR CLEANING

When using the sponge balls for cleaning the diameter size must be bigger than the line diameter to have a scrubbing effect.

Item No.	Diameter
3200337-6	Ø 6 mm for 4 - 5 mm ID line
3200337-8	Ø 8 mm for 6 mm ID line
3200337-9	Ø 9 mm for 6.7 - 7 mm ID line
3200337-10	Ø 10 mm for 7 - 8 mm ID line
3200337-15	Ø 15 mm for 10 - 12 mm ID line

Other diameter are available on request.



CLEANING

ACCESSORIES

CLEANING BRUSHES

Cleaning brushes for dispense heads.

Item No.	Description	System	Fitting
1900670	Brush for dispense heads	A/M/G	Flat/Combi
1900671	Brush for dispense heads	S/D	Well



CLEANING BRUSHES

Cleaning brushes for taps.

Item No.	Description	Fitting
1900730	Brush for taps	Ø 20/300 mm long
1902989	Brush for taps	Ø 8/300 mm long



CLEANING BALL FOR TAPS

Item No.	Description
88-402-001	Bevi cleaning ball for taps (all spout diameters)
3619L	Cleaning ball for taps (all spout diameters)



ACCESSORIES

FOB DETECTORS

INSIGHT

To avoid foam when a keg empties or after a new keg is connected all beer lines need a foam detector to immediately shut down the beer flow. With a FOB detector beer lines stay full at all times and support a correct dispense performance.

SPECIFICATIONS

Item No.	Description	Product lines inlet and outlet
1903640	Plastic FOB Detector without wall bracket	Out 5/8" OD In 5/8" ID
1903640-W	Plastic FOB Detector with wall bracket	OD 2 x 5/8"

Other variants are available on request



FLOW CONTROLLER

INSIGHT

It is of great importance that all beer types are poured at the correct flow rate from the dispense tap.

The Micro Matic Flow Controller can be adjusted by the technician on installation to ensure correct pour. Once you have set the flow rate the tamper evident device can be fitted to the controller to ensure the setting is not changed, without your knowledge.

All units are supplied with bracket and tamper evident device. Should the Flow Controller be required for a direct in line installation, remove the controller from the wall bracket assembly.

SPECIFICATIONS

Item No.	Description	In	Out
803097KS2	With bracket	3/8"	3/8"
802482KS2	With bracket	3/8"	3/16"
803287KS2	With bracket	3/8"	5/16"

All flow controllers are supplied with Tamper Evident Device as standard



PARTY PUMP

HAND PUMP SYSTEM

INSIGHT

The Hand Pump is fitted directly to the dispense head. The dispense head is connected to the keg and beer is dispensed by operating the Hand Pump.

CLEANING AND MAINTENANCE

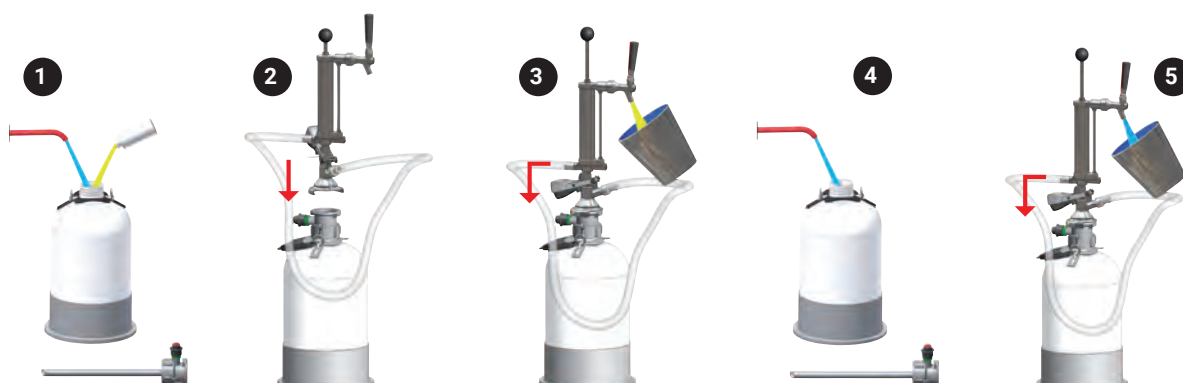
1. Mix detergent and water (follow instructions given by your supplier of detergent).
2. Mount cleaning cap and connect dispense head/ Party Pump.
3. Flush system - allow contact time of detergent according to instruction given by your supplier of detergent.
4. After cleaning degas system by pulling PRV. Do not attempt to remove cap before the system is fully degassed. Disconnect dispense head/Party Pump - fill cleaning bottle with clean water.
5. Re-connect cleaning cap and flush with pure water to make sure that all detergent is gone.

Micro Matic recommends to flush the Party Pump daily with water after closing hours. Minimum clean the system weekly with draft beer detergent - just make sure only to use detergent specified for draft beer. Remember to use protection gloves!



SPECIFICATIONS

Item No.	Description	Connection	Systems
3100202	Dispense pump with dispense tap and 5/8" wing nut	2 x 5/8"	Fit all systems
3A8L3CA00000	Dispense head with turnable probe	2 x 5/8"	A-System
3G151CA00001	Dispense head with turnable probe	2 x 5/8"	G-System
5SH185CC00000	Dispense head with turnable probe	2 x 5/8"	S-System



Micro Matic Terms of Sale and Delivery (Version 1.3/01.01.14)

1. Conclusion of Contract

1.1. The Parties agree that CISG (United Nations Convention on Contracts for the International Sale of Goods) governs the Parties' conditions unless otherwise provided in the following amendments and additions and/or by the written agreement entered into between the Parties

2. Prices and Payment – Retention of Title

- 2.1. All prices are excl. VAT, public dues of any nature, transport etc.
- 2.2. Until delivery of the goods, seller is entitled to increase the price equivalent to any price increase made by seller's sub-contractors, changes of rates of exchange, political events, direct or indirect taxes or other conditions which the seller cannot control.
- 2.3. Payment is net 30 days on delivery. On late payment default interest is charged at a rate of 2 per cent per month. If payment is not made on time or if buyer omits to take/receive the goods sold once buyer is committed to do so, seller is entitled immediately and without further notice to cancel the sale.
- 2.4. The ownership of the goods sold remains with seller in all respects until buyer effectively has paid the purchase price and all other costs attached to the purchase.

3. Time and Place of Delivery of Seller's Goods

- 3.1. Notified times of delivery are indicative only and subject to full approval of the contents of the agreement, for instance accepted drawings and finally confirmed dimensions. If full or partial prepayment has been agreed, it is a condition that such payments actually have been effected. Failing indication of an exact delivery date, but on the contrary a delivery period, such a period is counted from the date when seller has received all necessary information for fulfilment of the contract and provided that agreed prepayments, if any, have been effected.
- 3.2. All deliveries are made "DAP" (EUROPE INCOTERMS 2010). The risk of the goods purchased passes to buyer on delivery. In cases where buyer is committed to collect the goods and seller keeps them ready, the risk passes to buyer already at that time. If it is agreed that delivery is to take place from a site other than seller's place of business, the transport is made to such site, incl. any loading, at buyer's own risk, unless otherwise expressly agreed.

4. Duty of Inspection and Notice of Lack of Conformity

- 4.1. Immediately on receipt, buyer shall inspect the goods thoroughly to ensure that the goods are conforming with and delivered according to the contract. If buyer at that time believes that the goods sold do not conform to the contract, buyer must **immediately** and not later than 8 days from delivery notify seller in writing if he will rely on nonconformity.
- 4.2. If in respect of seller's goods or parts hereof buyer receives notice of lack of conformity from buyer's own customers or other users of seller's goods, buyer must immediately pass such notice in writing/tender the notice to seller. If buyer does not observe this duty, buyer may not put forward any claims of nonconformity or compensation against seller at a later stage and in the mutual relationship between buyer and seller buyer must indemnify seller against any claim rightly adjudicated directly from seller in favour of buyer's customers.
- 4.3. If within 3 months from the time of delivery buyer has not made a written notice of lack of

con-formity, buyer is in all respects prevented from relying on any nonconformity, compensation or guarantee claims or other remedies whatsoever.

5. Nonconformity

- 5.1. If it becomes apparent that the goods do not conform to the contract, seller has the option to effect repairs or otherwise to redress. Only if within a reasonable time and on a reasonable number of repair attempts seller is not able to correct or make good the defect etc., buyer may arrange for repair by third party or claim a reduction in the purchase price. If buyer unjustly arranges for third party to repair, buyer may not in such cases claim cover of his costs in respect thereof from seller.
- 5.2. In cases of short deliveries (quantitative lack of conformity) seller may make subsequent deliveries within a reasonable time, in which case buyer may not invoke breach. [Goods not deviating more than 5 per cent as compared to the agreed quantity are considered to fulfil the agreed quantity.]
- 5.3. Buyer carries the full risk that seller's goods are suited for purposes particularly applicable for buyer.

6. Limitation of Liability

- 6.1. Seller is only liable for defects in seller's goods if buyer has used the goods as prescribed and in a sound manner, and according to seller's directions, if any. Seller's liability is limited to defects in seller's own goods and not to defects or faults that arise in connection with seller's goods being incorporated in or to those of others.
- 6.2. The seller is not responsible for the buyer's selection of the product, including compatibility of the product, its use and results, unless the contract explicitly refers to these. The seller undertakes no responsibility for the buyer's selection of potential supplementary equipment and service requested for use with the product as well as application and results of same. The seller reserves the right to modify his products without notice as far as such modifications do not cause major restrictions of the applications.
- 6.3. In no circumstances is seller liable for any loss on operations, time, profit margin or other indirect losses suffered by buyer or buyer's customers or other users of seller's goods. Buyer may not claim compensation to cover the costs incidental to dismantling and remounting the objects or installations, in which the goods might be incorporated.
- 6.4. To the extent that seller is held liable towards third parties, buyer must hold seller harmless to the extent such liability exceeds the limits set out in these Terms.
- 6.5. In no event may seller's liability for the goods supplied/or not supplied exceed 50 per cent of the value of individual, faulty products.

7. Product warranty

- 7.1. Notwithstanding the above item 4, however provided the buyer give notice of defects no later than 8 days after the defect' emergence/buyer becoming knowledgeable of the defects, the seller shall remedy any products showing defects within 24 months from the delivery time. The warranty does not cover wear and tear.
- 7.2. The seller may choose to remedy by adjustment, repair or replacement of defective parts. Wages in connection with dismantling and assembly will not be compensated.
- 7.3. If the product has been changed or serviced by any other than the seller or a repair operative referred by the seller, or if the product has suffered abuse, been used for purposes contrary to the seller's directions or purposes for which the products are not intended, the warranty shall

be annulled, including the seller's obligation to remedy the product without costs.

- If the seller does not comply with his obligations as mentioned above within reasonable time, the buyer may demand a proportional deduction of the defective product's purchase price. However, the deduction may not exceed 20 % of the purchase price for the whole product. Alternatively, the buyer may choose to arrange for a third party to remedy the product. In which case the seller will refund the buyer's expenses in this respect, provided that the expenses does not exceed 20 % of the purchase price for the whole product, of which the defective part forms part.
- 7.4. Seller's obligations in respect of defective products are expanded as per the above. The seller is therefore not liable for direct or indirect loss, including operating loss, loss of revenue and similar costs or damages.

8. Product Liability

- 8.1. In the mutual relations between seller and buyer, seller excludes any liability for commercial property damage that may be attached to seller's goods. If seller is met with claims for damages for commercial property damage from buyer's customers, their customers or other later users of seller's goods, buyer in the relations between seller and buyer is committed to indemnify seller for any such claim and to cover seller's reasonable costs to any defence against that.

9. Intellectual Property Rights and Secrecy

- 9.1. All intellectual property rights to seller's goods together with all material delivered in this connection belongs to seller.
- 9.2. Buyer has no right without seller's written consent to grant third party knowledge of technical or commercial information, which according to their nature are confidential or which seller at the time of making the contract or later had stated as confidential. All drawings, models and other technical documents on the goods, which prior to or after the making of the contract are handed from seller to buyer, remain the property of seller. Without seller's consent said material may alone be applied for the proper use or resale of the goods.

10. Force Majeure

- 10.1. In case of force majeure, seller is released from his obligations as long as the force majeure situation exists. Force majeure exists if seller or seller's sub-contractors are prevented from performing agreements governed by these Terms of Sale and Delivery as a consequence of events such as war, civil war, insurrection, terror actions, public restrictions, import or export bans, catastrophes of nature of any kind as well as extensive or local industrial conflicts, fire, power failure, computer viruses or alike, unless it is established that seller ought reasonably to have anticipated this at the time of making the contract.

11. Choice of Law and Venue

- 11.1. Any disputes arising out of or in connection with agreements between seller and buyer are to be settled pursuant to CISG at the district court where seller is domiciled or the Maritime and Commercial Court of Copenhagen (Sø- og Handelsretten i København), at seller's option.
- 11.2. However, the seller is entitled to demand arbitration pursuant to the general rules of the Danish ACT on ARBITRATION (The Arbitral Tribunal is set up in Copenhagen). Settlement through the court or arbitration does not exclude the possibility of an injunction or that other preliminary remedies be carried through at the relevant venue.

DEDICATED TO DRAFT QUALITY

Micro Matic is the global market leader in the supply of keg couplers, keg extractor valves and dispensing solutions to the brewing industry. We have pioneered industry-leading draft beer products and services since 1953 and are today active worldwide.

Quality is key in everything we do. Based on our experience, know-how and commitment to customer service, we create state-of-the-art beer dispensing solutions, pioneer educational programs and develop creative new point-of-sale merchandising.

MICRO-MATIC.COM

COMPANY ADDRESSES:

DENMARK (Headquarter)

Micro Matic A/S
Holkebjergvej 48
DK-5250 Odense SV
Tel.: +45 66 17 11 22
mm@micro-matic.com

LUXEMBOURG

Micro Matic S.A.
18, rue de Drinklange
L-9911 Troisvierges
Tel.: +352 97 90 30
mm@micro-matic.lu

SWEDEN

MM Service Center AB
Honungsgatan 2
SE-432 48 Varberg
Tel.: +46 340 545 700
mm@micro-matic.se

AUSTRALIA

Micro Matic Pty Ltd
Unit 4 12 Cook Street
Forestville, NSW, 2087
Tel.: +61 2 9451 3933
mm@micro-matic.com.au

USA

Micro Matic USA, Inc.
2364 Simon Court
Brooksville, FL 34604
Tel.: +1 352 799-6331
sales@micro-matic.com

GERMANY

Micro Matic Deutschland GmbH
Vorgebirgsstraße 16
D-50389 Wesseling
Tel.: +49 (0) 2236 70254-00
mm@micro-matic.de

VIETNAM

EAC Trading Vietnam
30 Ly Thai To Street, Room #601
Hanoi, Vietnam
Tel.: +84 24 3826 0550
info@eac.com.vn

GREAT BRITAIN

Micro Matic A/S
Australia House
Unit D Metcalf Drive
Accrington, Lancashire
BB5 5TU
Tel.: +44 (1254) 669700
mm@micro-matic.co.uk

CHINA

Micro Matic Beverage
Equipment (Tianjin) Co Ltd
Building 2, No 29,
Luyuan Road
WuQing Development Area
Tianjin, 301700, P.R.China
Tel: +86 (0) 225966 2332-100

JAPAN

The East Asiatic Co. (Japan) Ltd.
Toranomom #2 Wai-ko Building, 6F
5-2-6 Toranomom,
Minato-Ku
Tokyo 105-0001
Tel.: +81 3 6695 7133
info2@eacjapan.co.jp

MEXICO

Micro Matic Mexico SA
Cascada 251
Colonia Privada Acueducto
CP 66100
Santa Catarina, Nuevo León
Tel.: +52 81 1377 7284
info@micro-matic.mx

NORTHERN IRELAND

Valpar Micro Matic Ltd.
13 Balloo Drive, Bangor
Co Down, BT19 7QY
Tel.: +44 (0)28 91454544
info@valpar.co.uk

© Micro Matic A/S 2020

This document was created by Micro Matic A/S and includes copyrighted material, trademarks and other proprietary information owned by Micro Matic A/S. All rights reserved. The document may not be reproduced or copied in any form or by any means such as graphic, electronic or mechanical, including photocopying without the prior written permission of Micro Matic A/S. All information and specifications are for information only and are subject to change without further notice.